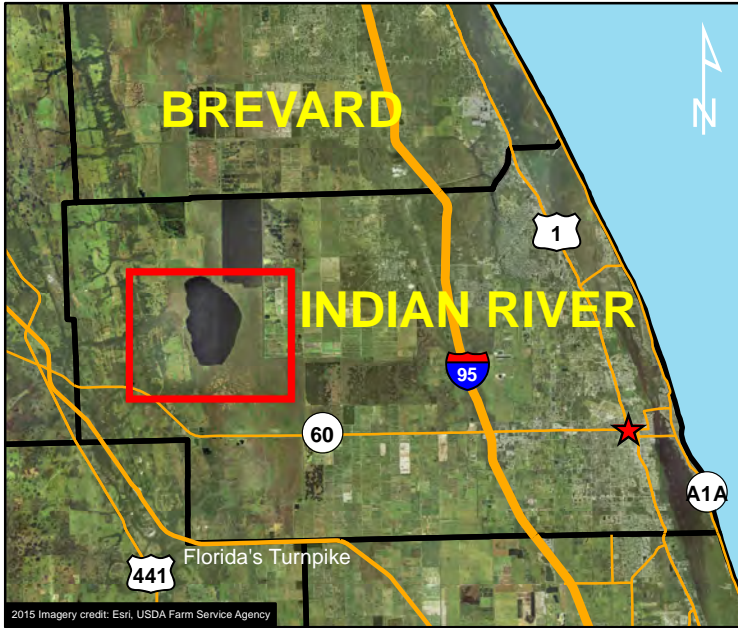



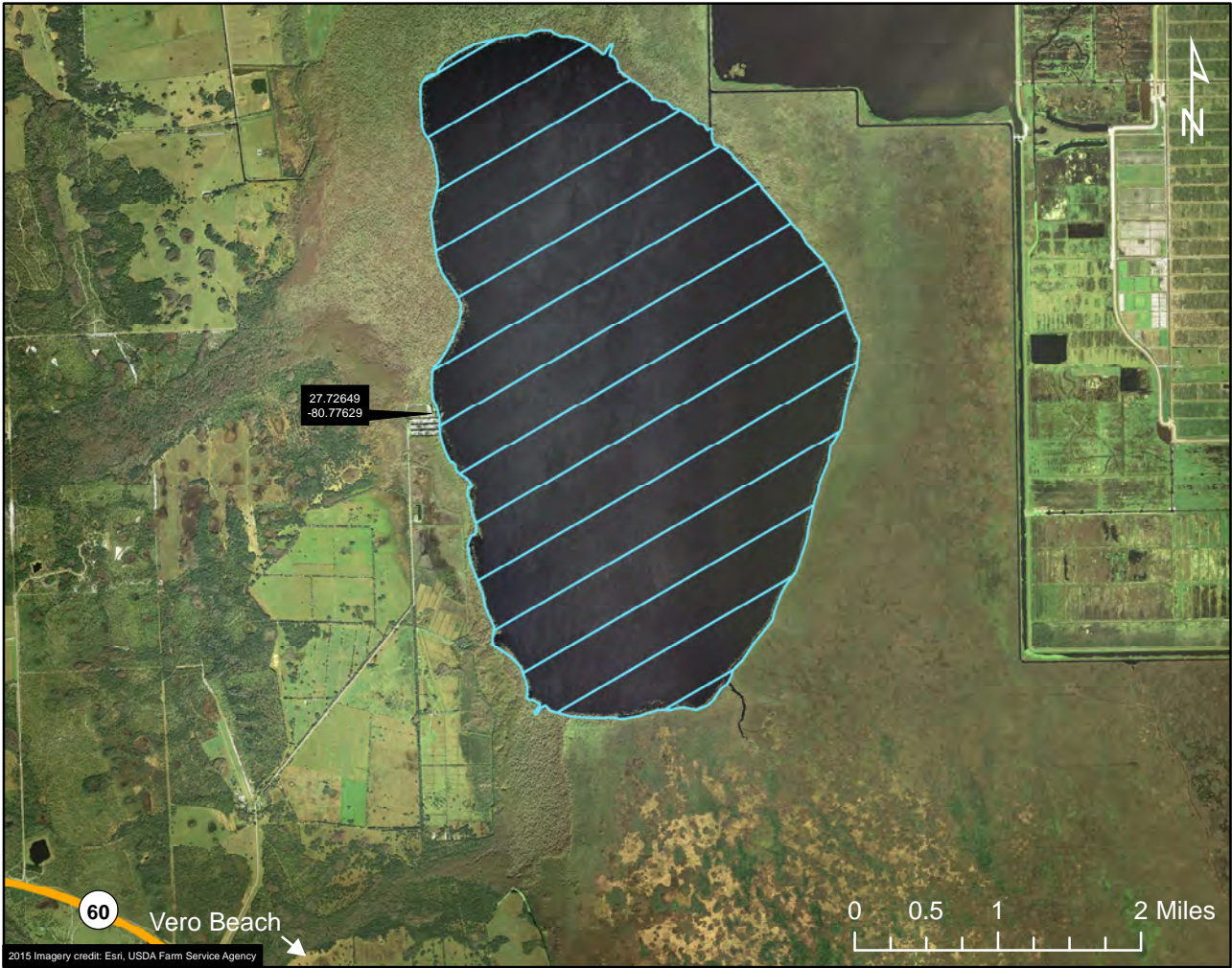


# AMU 500 - Blue Cypress Lake



### Legend

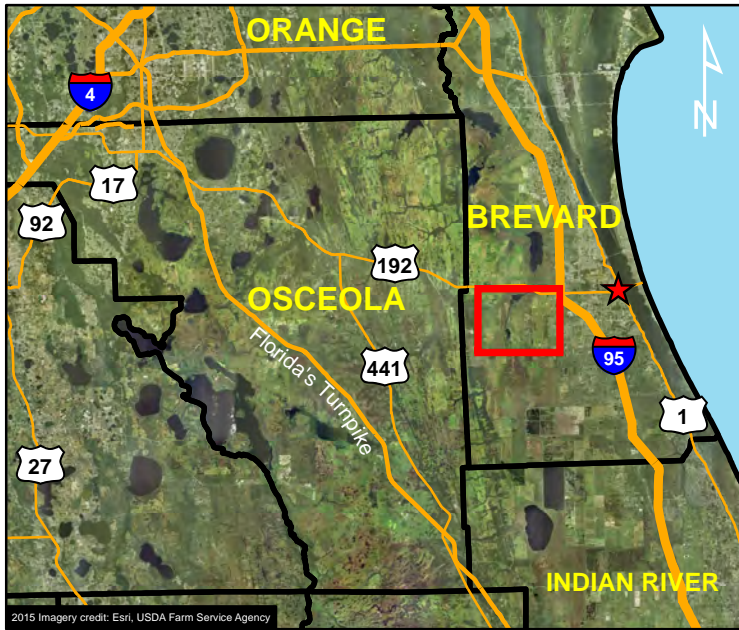
- ★ Vero Beach
-  Public Boat Ramp
-  Road
-  Harvest Unit



### **HARVEST UNIT DESCRIPTION:**




The state-owned waters located within the water line of Blue Cypress Lake in Indian River County; north of SR 60; excluding more than 50 yards up any connecting natural or manmade waterway. This map is offered as a courtesy to familiarize participants with the general location of the harvest unit. Please refer to your permit for full details of the harvest unit description and boundary.

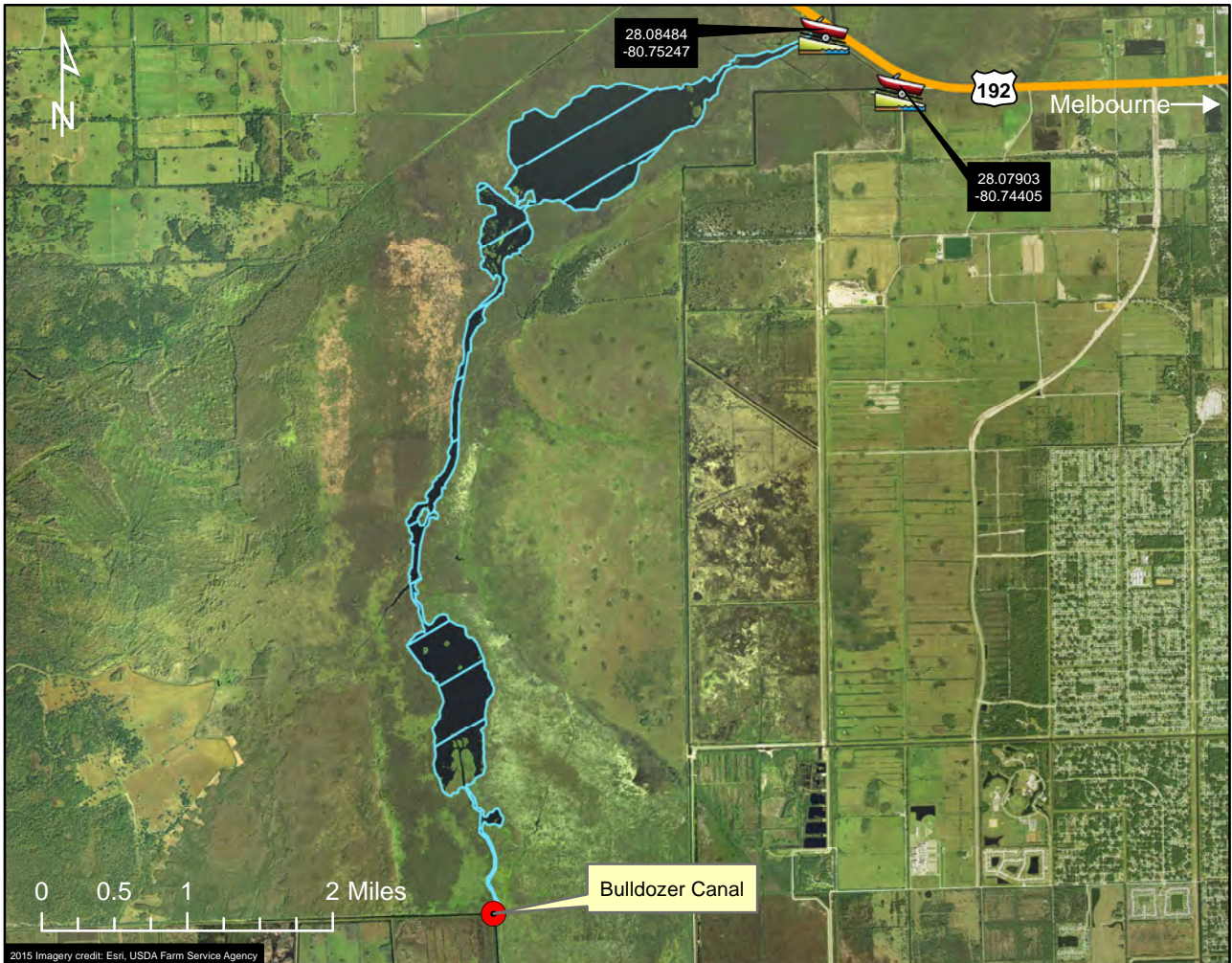
# AMU 501 - St. Johns River (Lake Hell N' Blazes)



2015 Imagery credit: Esri, USDA Farm Service Agency

## Legend

- ★ Melbourne
-  Public Boat Ramp
-  Road
-  Harvest Unit

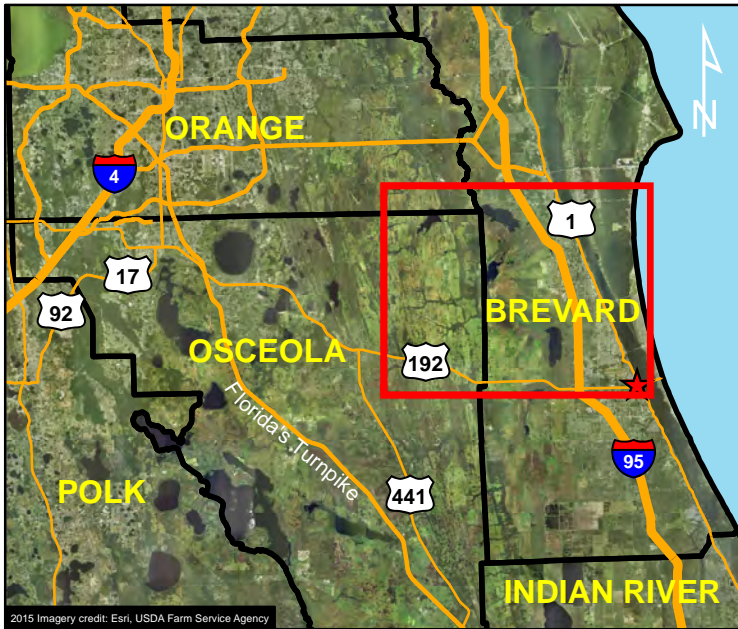


2015 Imagery credit: Esri, USDA Farm Service Agency

### **HARVEST UNIT DESCRIPTION:**

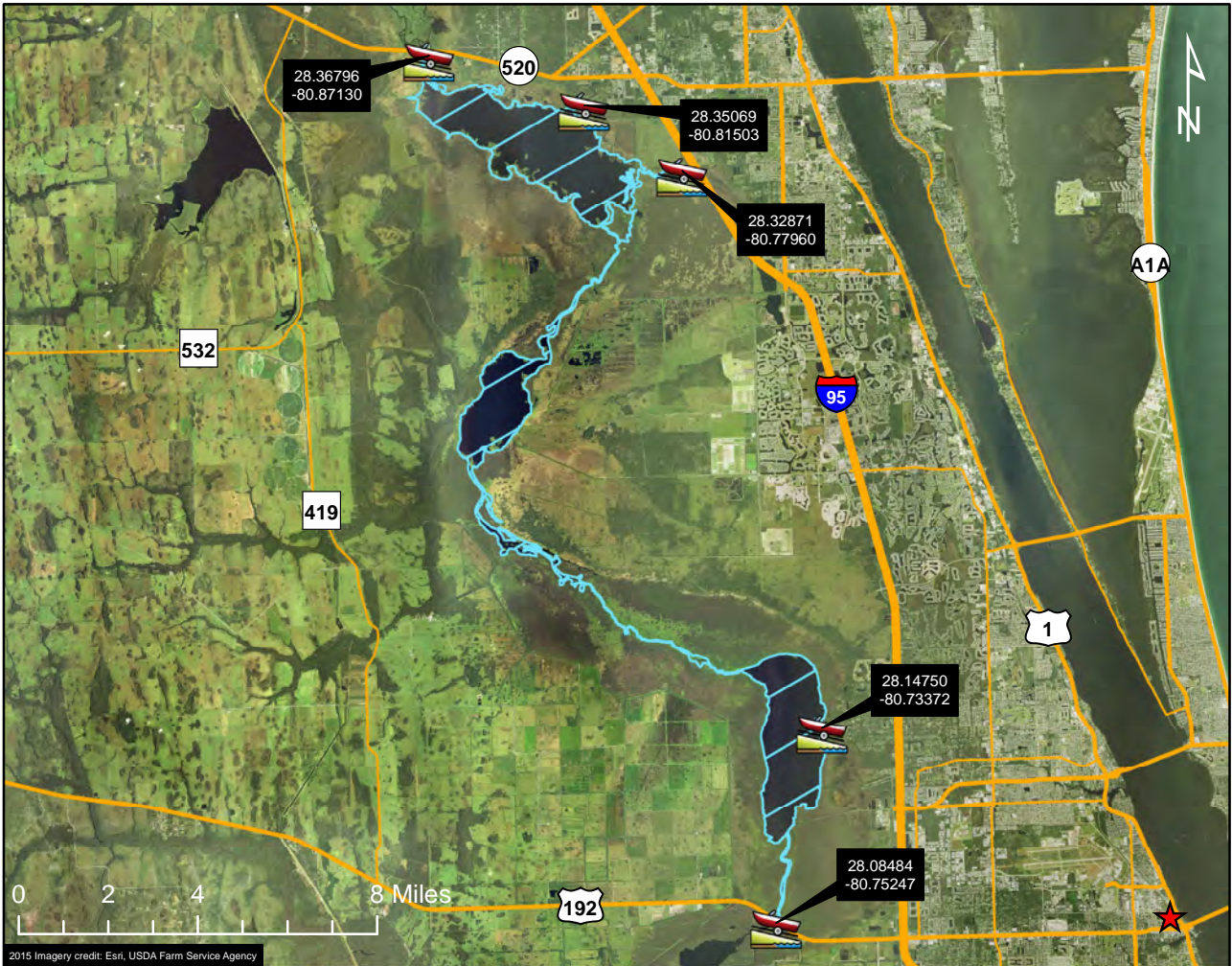
The state-owned waters located within the water line of the St. Johns River in Brevard County, south of US Hwy 192 to the Bulldozer Canal approximately 1 mile south of Lake Hell N' Blazes, and including Lakes Sawgrass, Little Sawgrass, and Hell N' Blazes; excluding more than 50 yards up any connecting natural or manmade waterway. This map is offered as a courtesy to familiarize participants with the general location of the harvest unit. Please refer to your permit for full details of the harvest unit description and boundary.

# AMU 502 - St. Johns River (Lake Poinsett)



### Legend

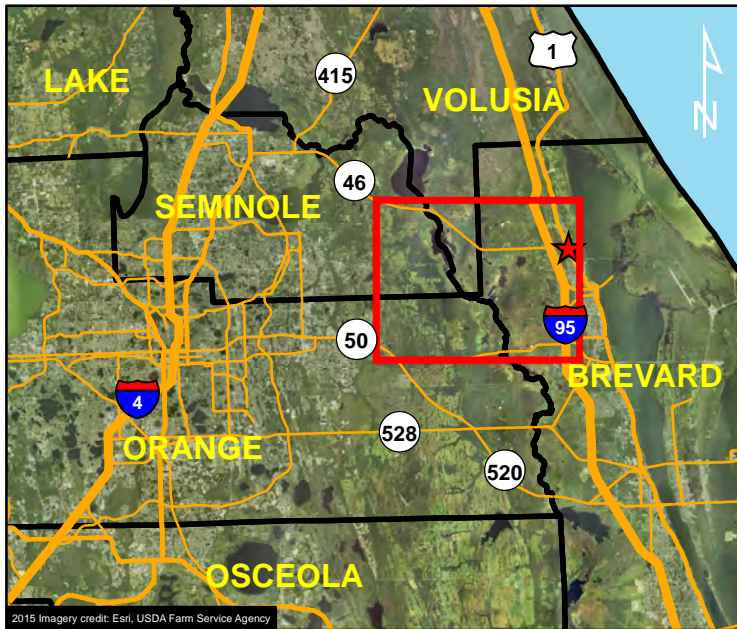
- Melbourne
- Public Boat Ramp
- Road
- Harvest Unit








### **HARVEST UNIT DESCRIPTION:**

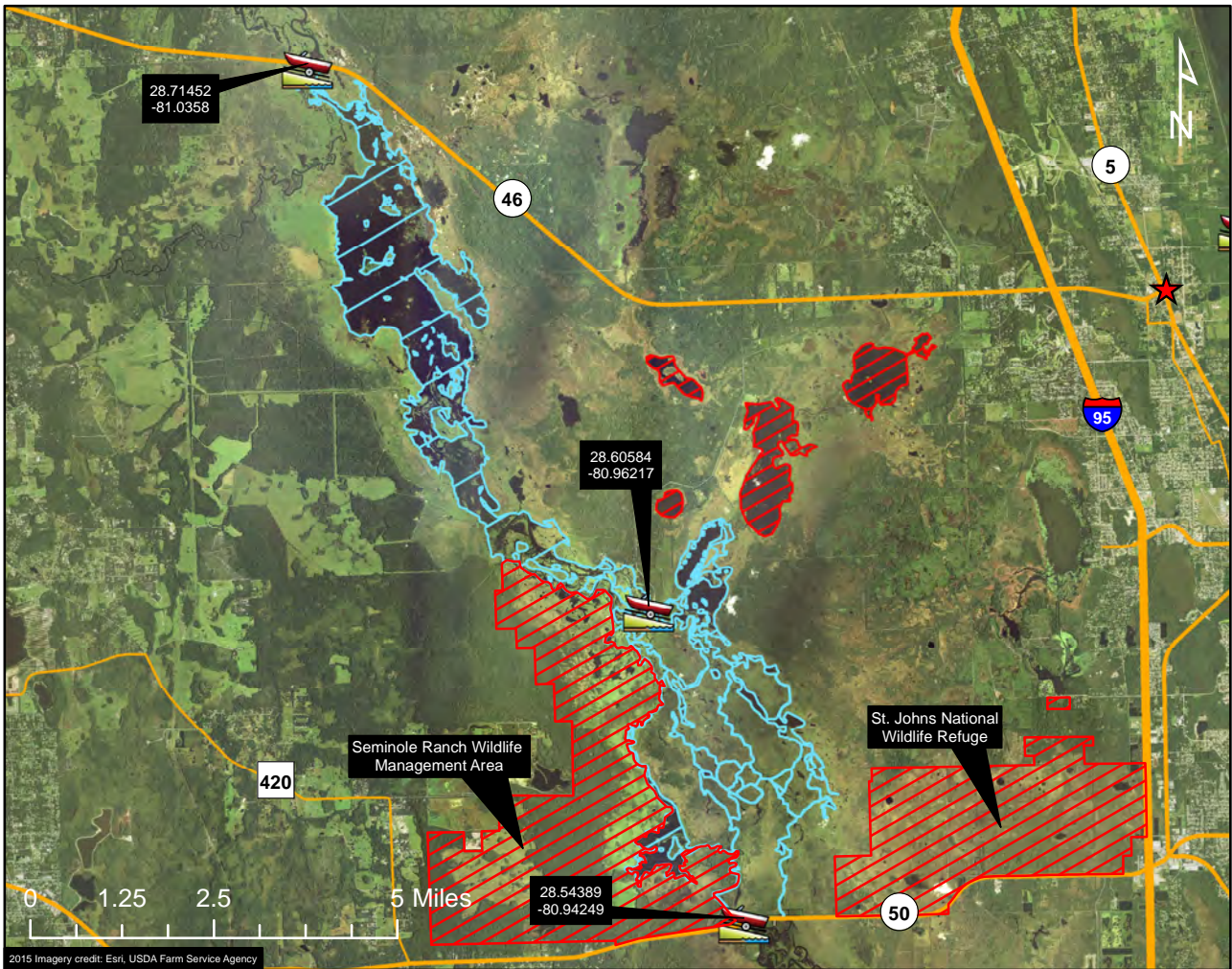
The state-owned waters located within the water line of the St. Johns River in Brevard, Osceola, and Orange counties; north of US Hwy. 192 and south of SR 520; and including Lakes Washington, Winder, and Poinsett; excluding more than 50 yards up any connecting natural or manmade waterway. This map is offered as a courtesy to familiarize participants with the general location of the harvest unit. Please refer to your permit for full details of the harvest unit description and boundary.

# AMU 504 - St. Johns River (Puzzle Lake)



## Legend

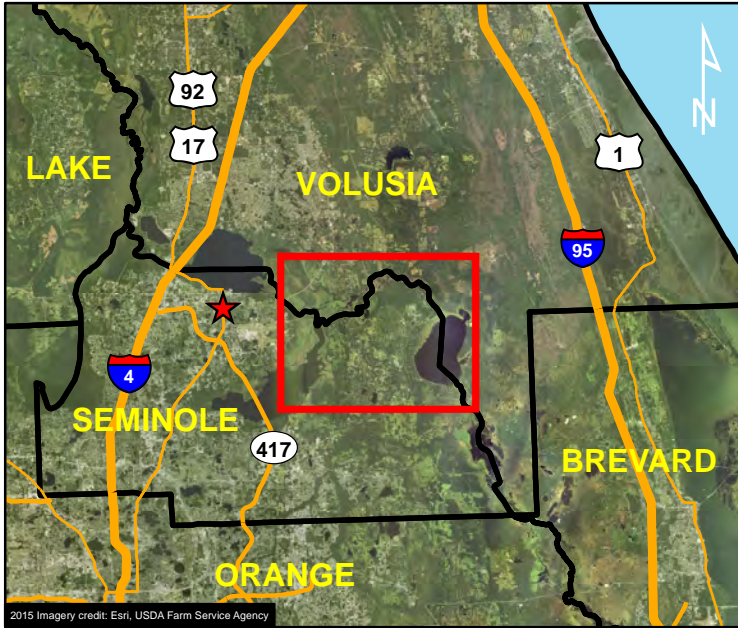
-  Mims
-  Public Boat Ramp
-  Road
-  Restricted Area
-  Harvest Unit



### HARVEST UNIT DESCRIPTION:

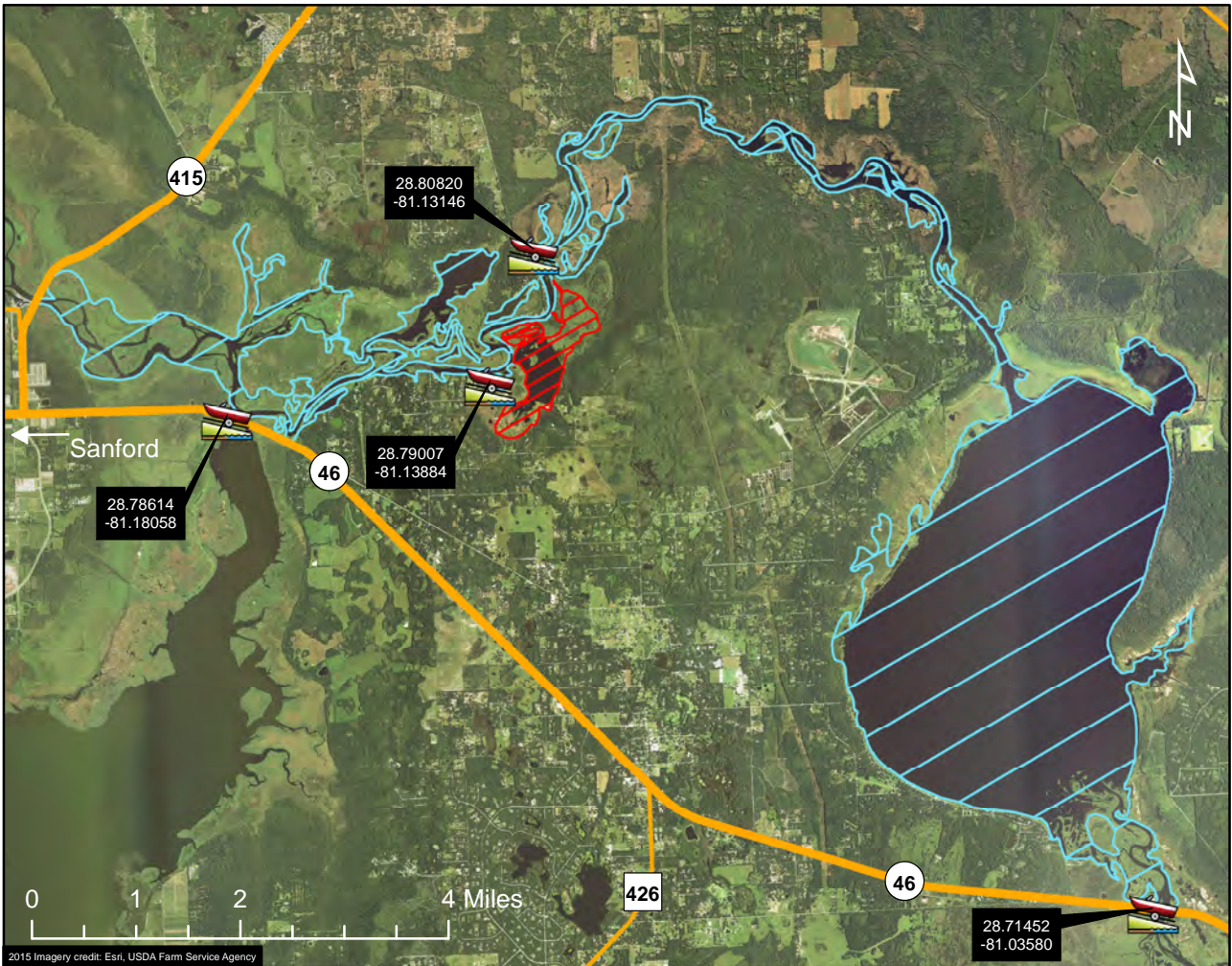
The state-owned waters located within the water line of the St. Johns River in Brevard, Orange, Seminole, and Volusia counties; north of SR 50 and south of SR 46; and including Lakes Cane, Ruth, Clark, and Puzzle; excluding Lakes Ellis, Loughman, Silver, and Salt, the St. Johns National Wildlife Refuge, Seminole Ranch Wildlife Management Area, and more than 50 yards up any connecting natural or manmade waterway. This map is offered as a courtesy to familiarize participants with the general location of the harvest unit. Please refer to your permit for full details of the harvest unit description and boundary.

# AMU 505 - Lake Harney



### Legend

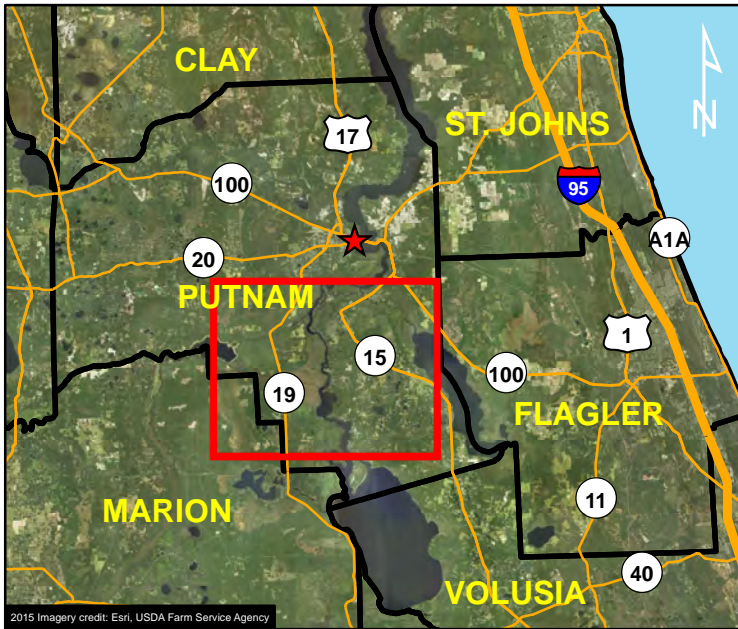
- ★ Sanford
- Public Boat Ramp
- Road
- Restricted Area
- Harvest Unit



### HARVEST UNIT DESCRIPTION:

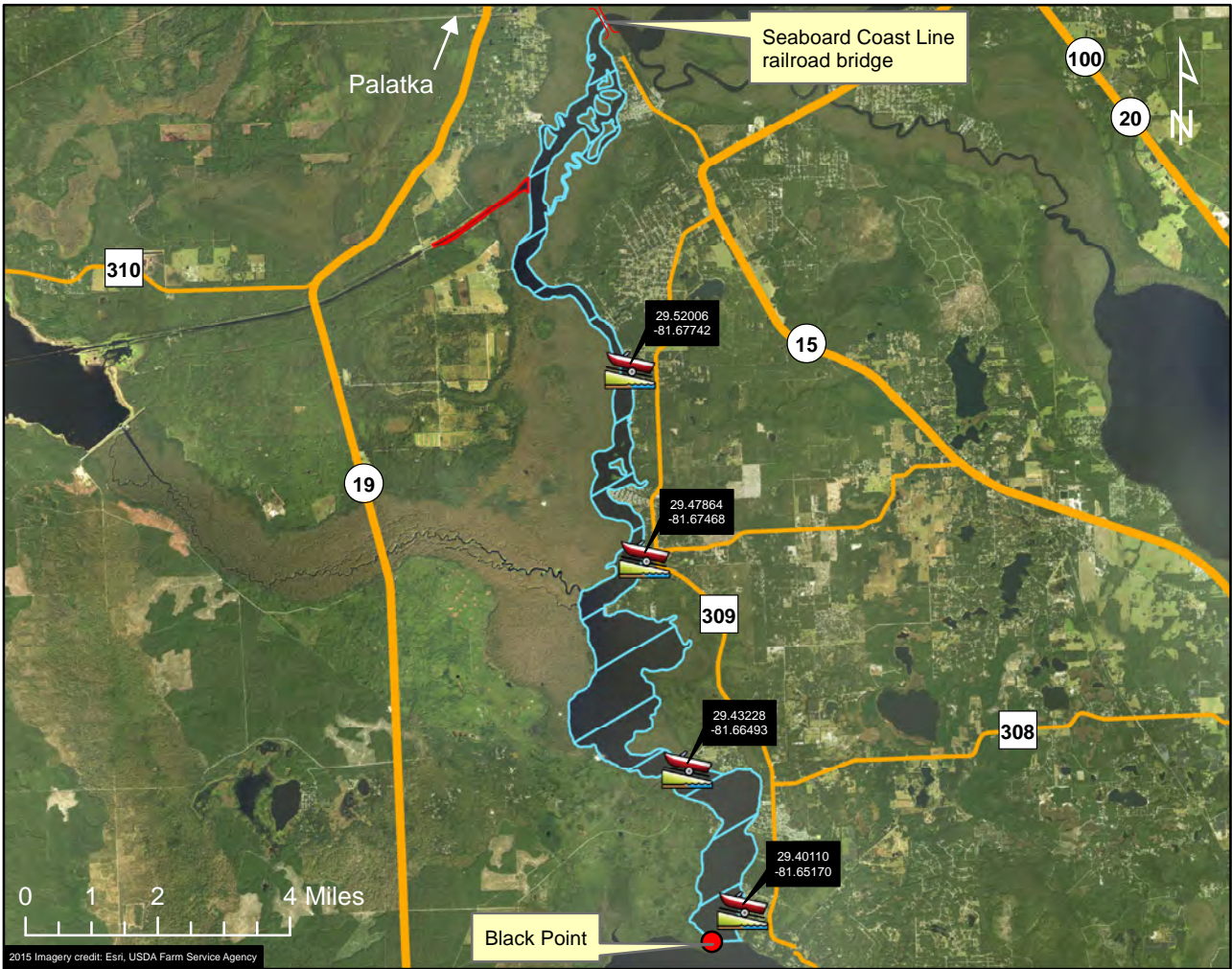
The state-owned waters located within the water line of the St. Johns River in Seminole and Volusia counties; north of SR 46 and east of SR 415; and including Lake Harney and Thornhill and Mud lakes; excluding Mullet Lake and more than 50 yards up any connecting natural or manmade waterway. This map is offered as a courtesy to familiarize participants with the general location of the harvest unit. Please refer to your permit for full details of the harvest unit description and boundary.

# AMU 506 - St. Johns River (Welaka)



## Legend

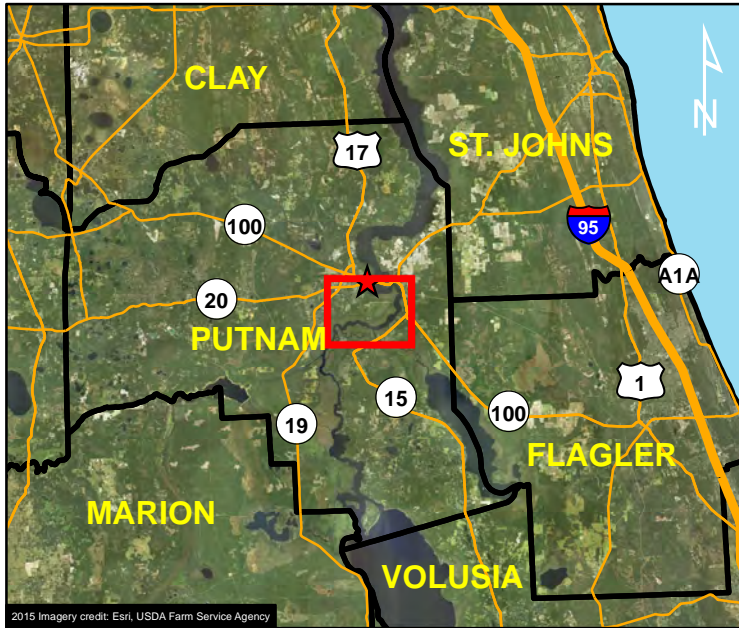
- Palatka
- Public Boat Ramp
- Road
- Restricted Area
- Harvest Unit



### **HARVEST UNIT DESCRIPTION:**

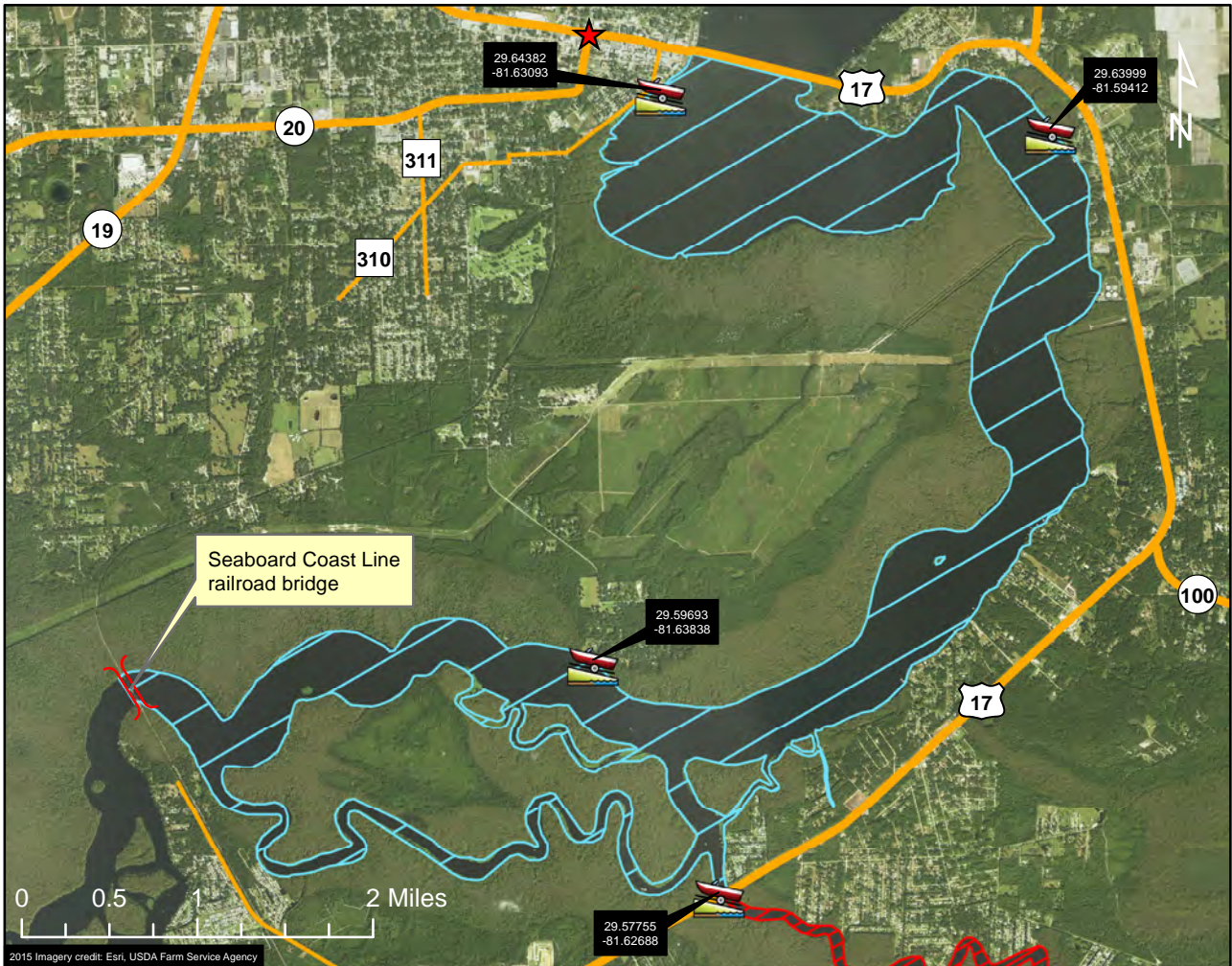
The state-owned waters located within the water line of the St. Johns River in Putnam County; north of an east-west line across the St. Johns River at Black Point and south of the Seaboard Coast Line railroad bridge; and including Trout Creek; excluding the Florida Barge Canal and more than 50 yards up any connecting natural or manmade waterway. This map is offered as a courtesy to familiarize participants with the general location of the harvest unit. Please refer to your permit for full details of the harvest unit description and boundary.

# AMU 507 - St. Johns River (Palatka South)



### Legend

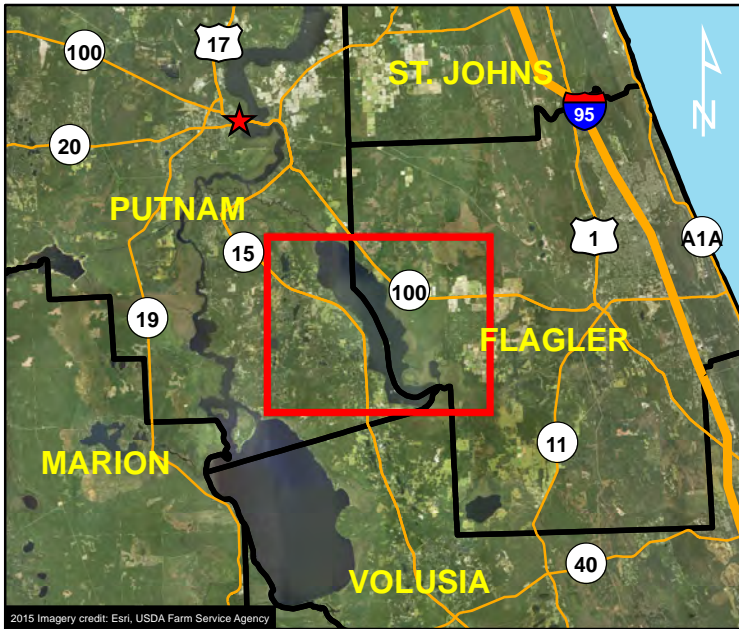
- Palatka
- Public Boat Ramp
- Road
- Restricted Area
- Harvest Unit








### HARVEST UNIT DESCRIPTION:

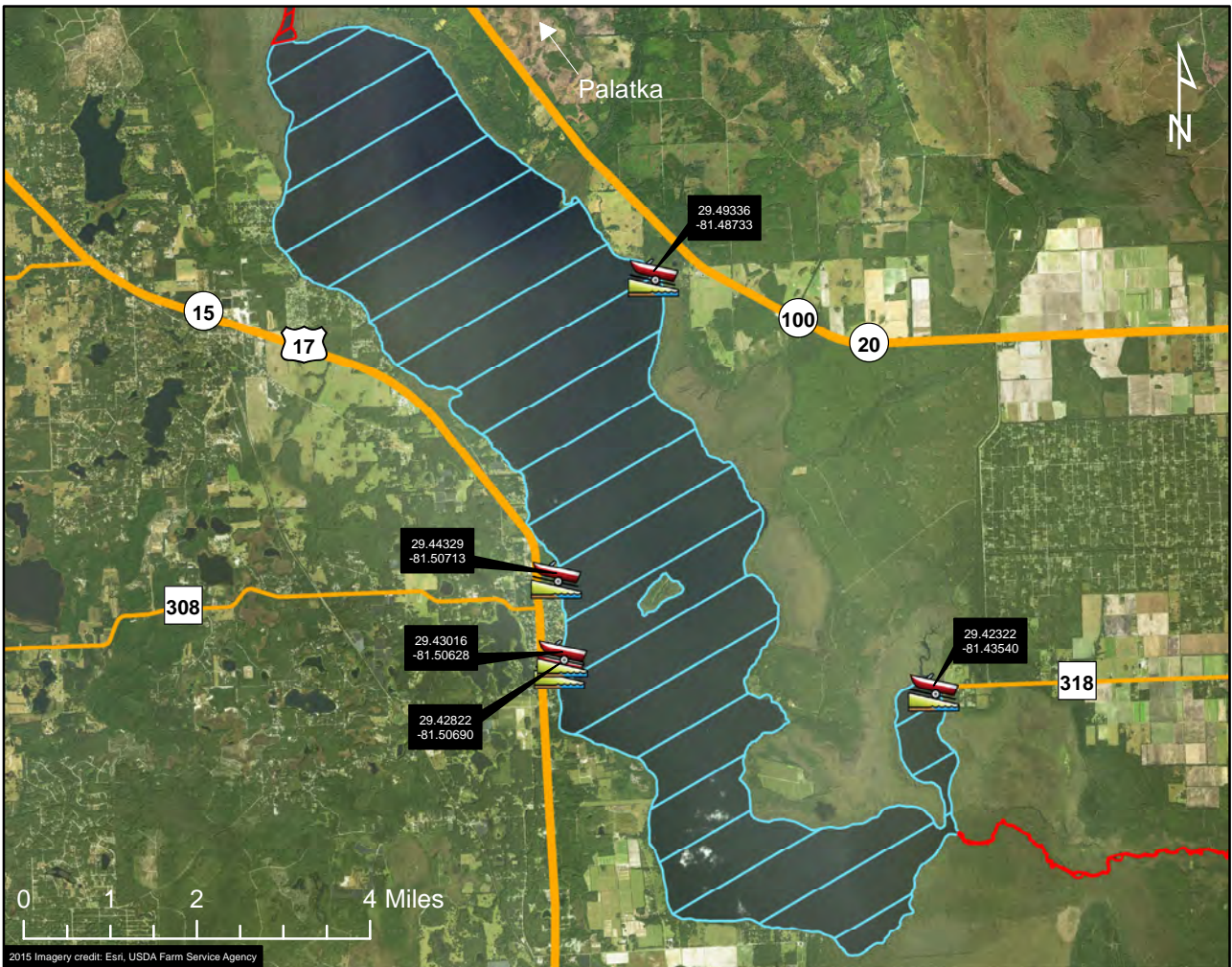
The state-owned waters located within the water line of the St. Johns River in Putnam County; south of US Hwy. 17 and north of the Seaboard Coast Line railroad bridge; and including Murphy and Dunns Creek; excluding Dunns Creek east of US Hwy. 17 and more than 50 yards up any connecting natural or manmade waterway. This map is offered as a courtesy to familiarize participants with the general location of the harvest unit. Please refer to your permit for full details of the harvest unit description and boundary.

# AMU 508 - Crescent Lake



## Legend

-  Palatka
-  Public Boat Ramp
-  Road
-  Restricted Area
-  Harvest Unit

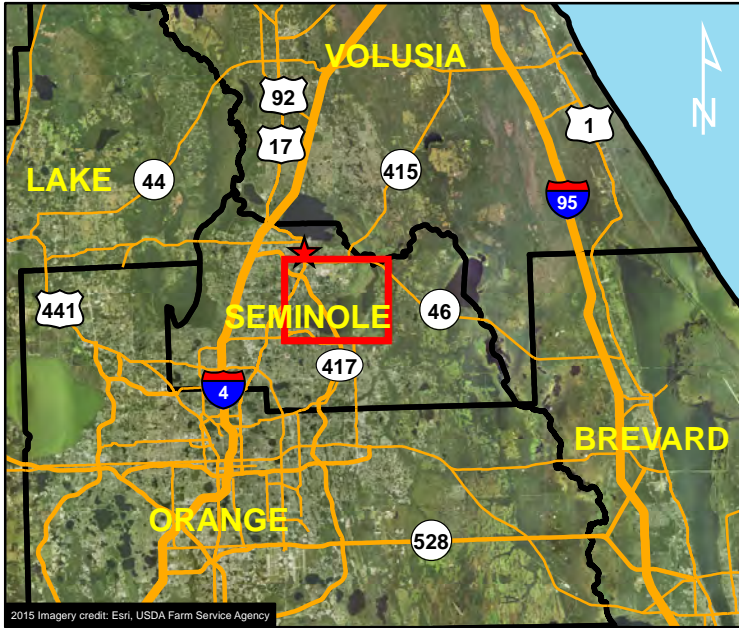


### **HARVEST UNIT DESCRIPTION:**




The state-owned waters located within the water line of Crescent Lake in Putnam and Flagler counties; including Dead Lake; excluding Dunns Creek, Haw Creek, and more than 50 yards up any connecting natural or manmade waterway. This map is offered as a courtesy to familiarize participants with the general location of the harvest unit. Please refer to your permit for full details of the harvest unit description and boundary.

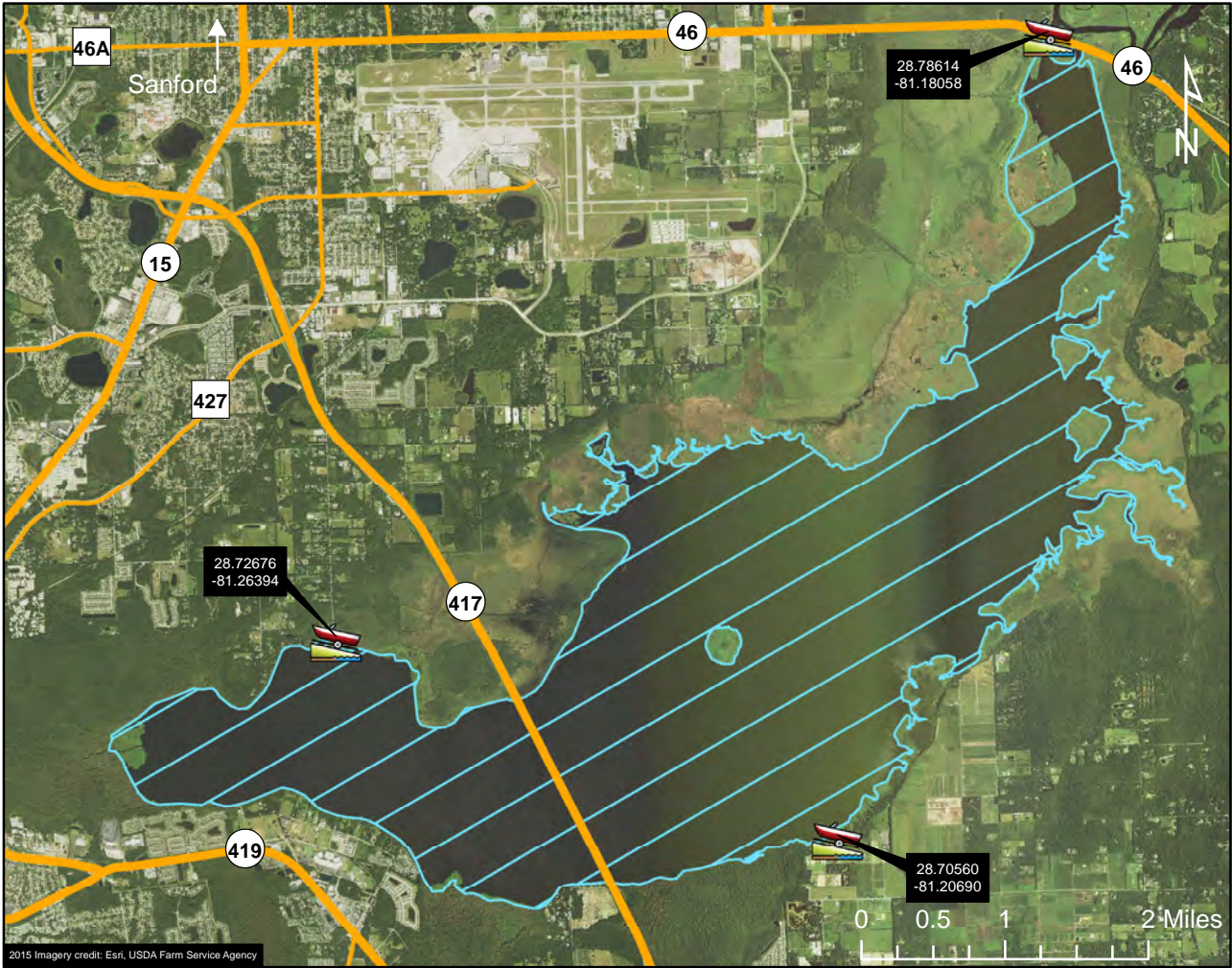


# AMU 510 - Lake Jesup



### Legend

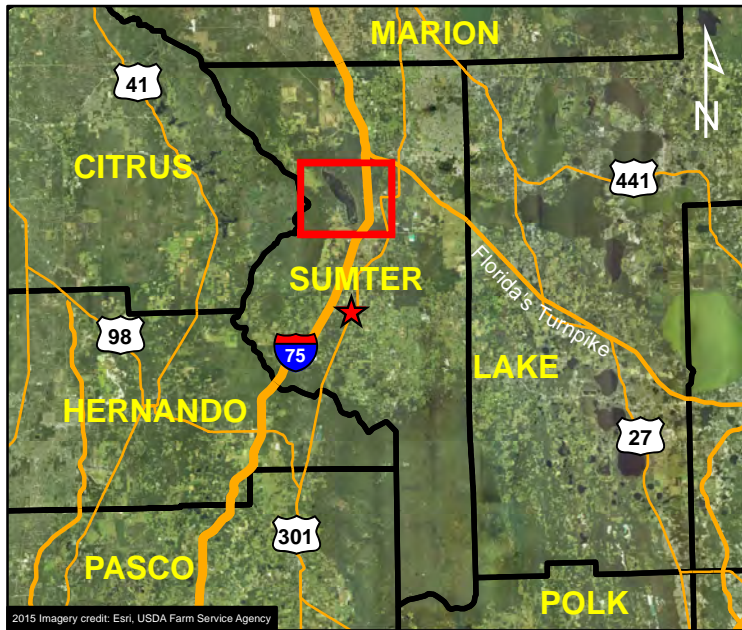
- ★ Sanford
-  Public Boat Ramp
-  Road
-  Harvest Unit








### **HARVEST UNIT DESCRIPTION:**

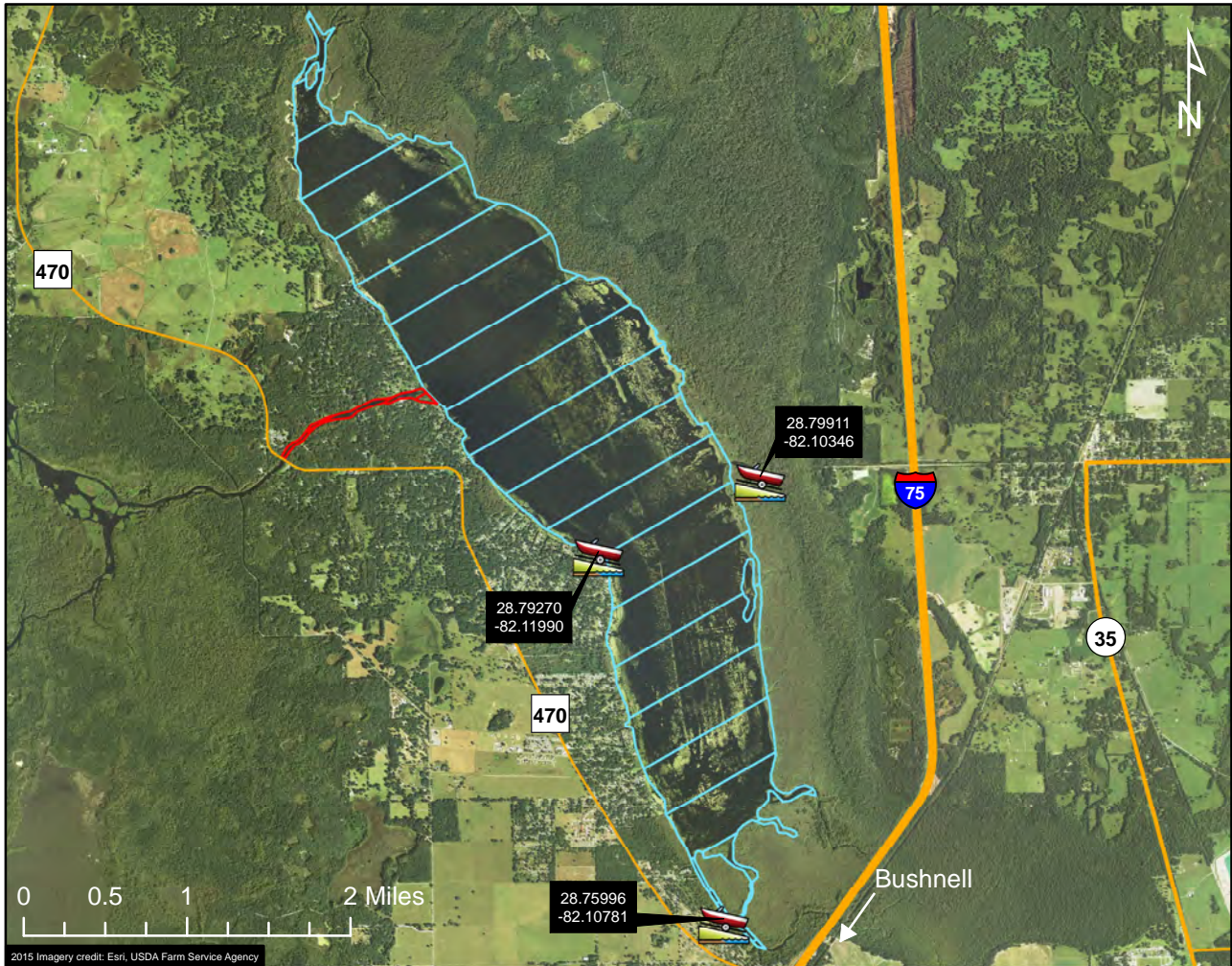
The state-owned waters located within the water line of Lake Jesup in Seminole County; south of SR 46; excluding more than 50 yards up any connecting natural or manmade waterway. This map is offered as a courtesy to familiarize participants with the general location of the harvest unit. Please refer to your permit for full details of the harvest unit description and boundary.

# AMU 515 - Lake Panasoffkee



## Legend

-  Bushnell
-  Public Boat Ramp
-  Road
-  Restricted Area
-  Harvest Unit



### **HARVEST UNIT DESCRIPTION:**

The state-owned waters located within the water line of Lake Panasoffkee in Sumter County; excluding Outlet River and more than 50 yards up any connecting natural or manmade waterway. This map is offered as a courtesy to familiarize participants with the general location of the harvest unit. Please refer to your permit for full details of the harvest unit description and boundary.

### **County-wide Alligator Harvest Unit Maps**

These maps are offered as a courtesy to familiarize participants with the general location of each county-wide harvest unit. The harvest areas listed in each county-wide map are offered as suggestions and are not intended to limit additional accessible areas available for harvest. Some harvest units are more restrictive than others so please refer to your permit for full details of the harvest unit description, boundary, and harvest period.

To search for additional bodies of water that have been hunted under a county-wide permit in the past, please use the “Statewide Alligator Harvest Data Search” resource located on the MyFWC.com website here: <http://myfwc.com/wildlifehabitats/managed/alligator/harvest/data-search/>.