






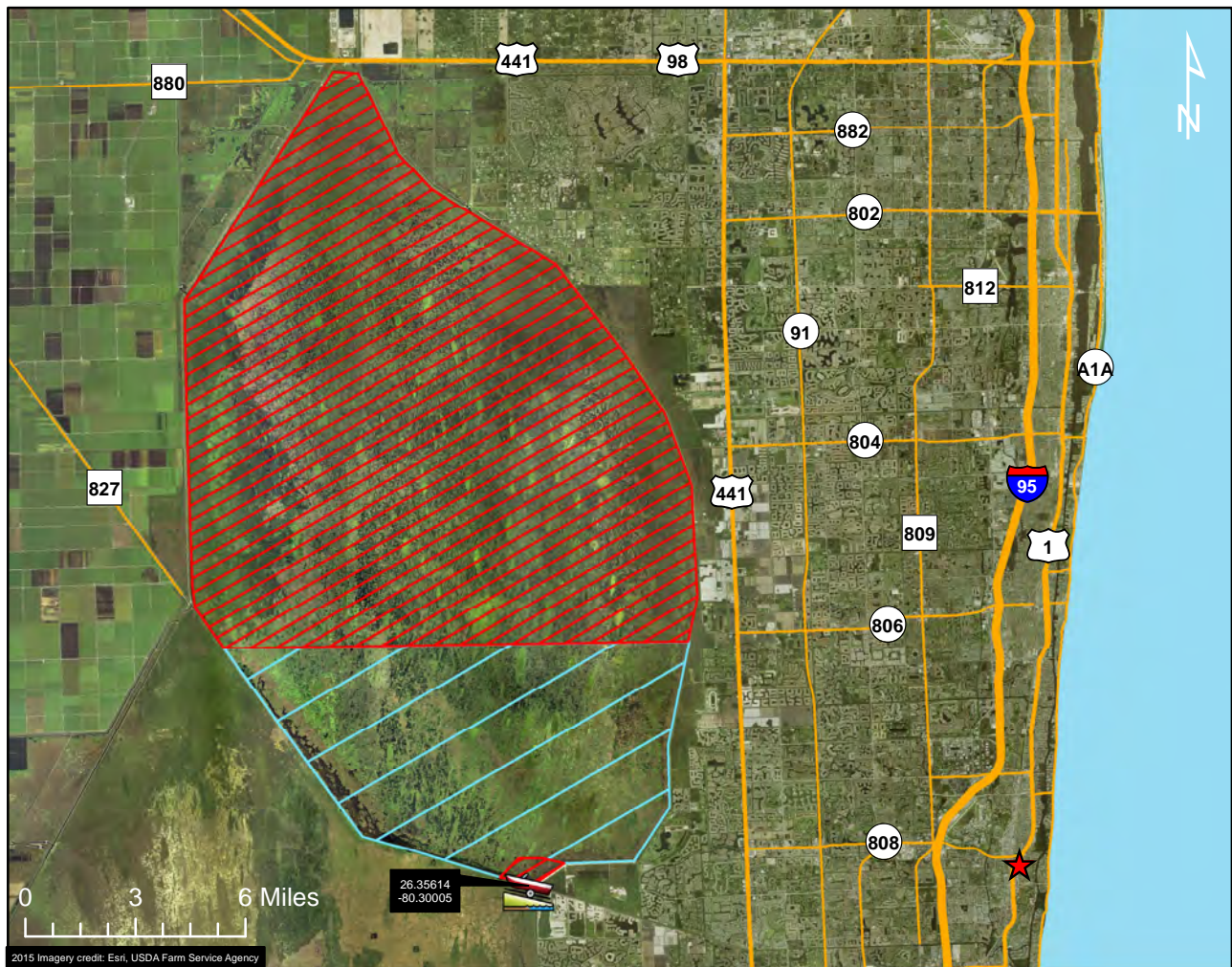
# AMU 401 - A.R.M. Loxahatchee NWR



2015 Imagery credit: Esri, USDA Farm Service Agency

## Legend

-  Boca Raton
-  Public Boat Ramp
-  Road
-  Restricted Area
-  Harvest Unit



2015 Imagery credit: Esri, USDA Farm Service Agency

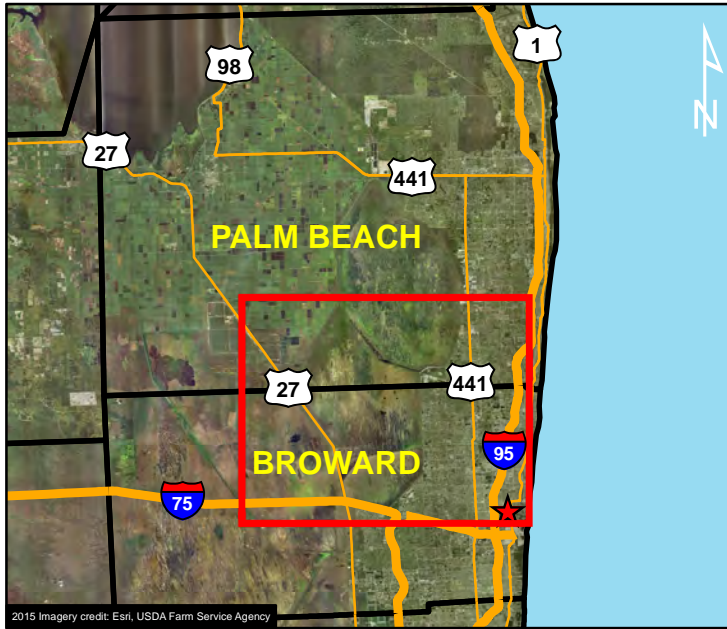
### **HARVEST UNIT DESCRIPTION:**

The state-owned or leased lands within the boundaries of the Arthur R. Marshall Loxahatchee National Wildlife Refuge in Palm Beach County, otherwise known as Water Conservation Area 1; south of an east-west line between canal mile marker 3 and canal mile marker 24; also known as latitude 26° 27.130'.

This harvest area is more restrictive than other areas; these additional restrictions are detailed in the A.R.M. Loxahatchee NWR alligator hunting brochure. This map is offered as a courtesy to familiarize participants with the general location of the harvest unit. Please refer to your permit for full details of the harvest unit description and boundary.

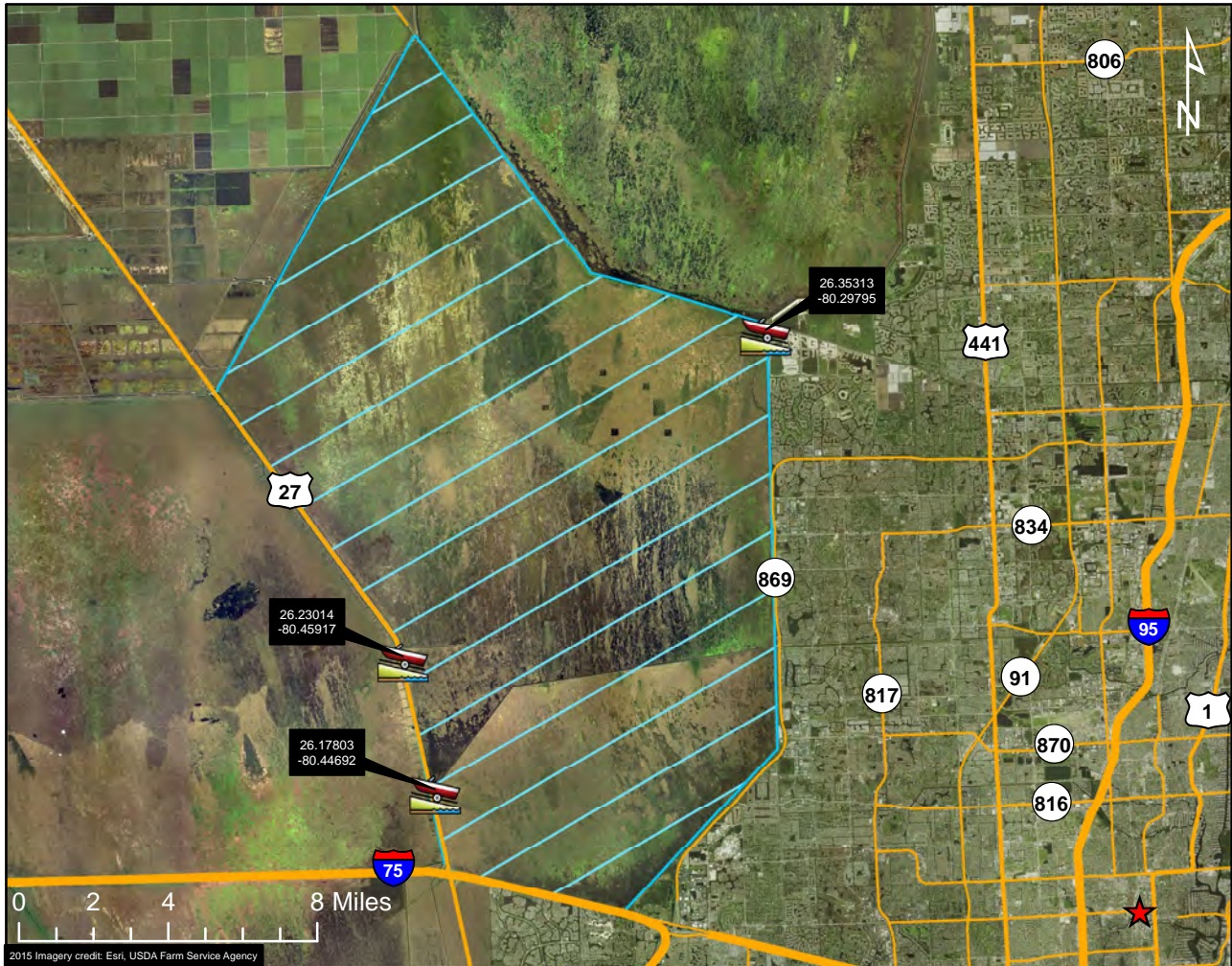


# AMU 402 - WCAs 2A & 2B



### Legend

- ★ Fort Lauderdale
- Public Boat Ramp
- Road
- Harvest Unit

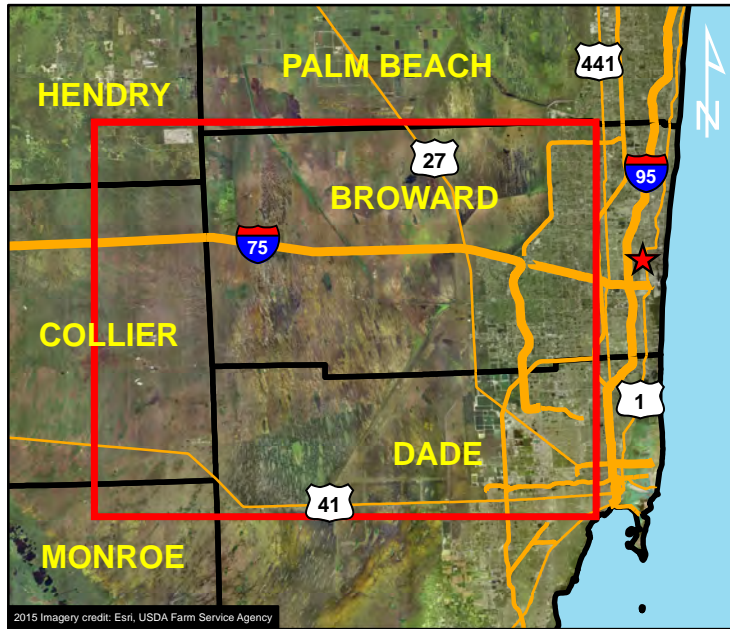


### HARVEST UNIT DESCRIPTION:





The state-owned or leased lands located within the boundaries of the Everglades and Francis S. Taylor Wildlife Management Area in Broward and Palm Beach counties, and otherwise known as Water Conservation Areas 2A and 2B. This map is offered as a courtesy to familiarize participants with the general location of the harvest unit. Please refer to your permit for full details of the harvest unit description and boundary.

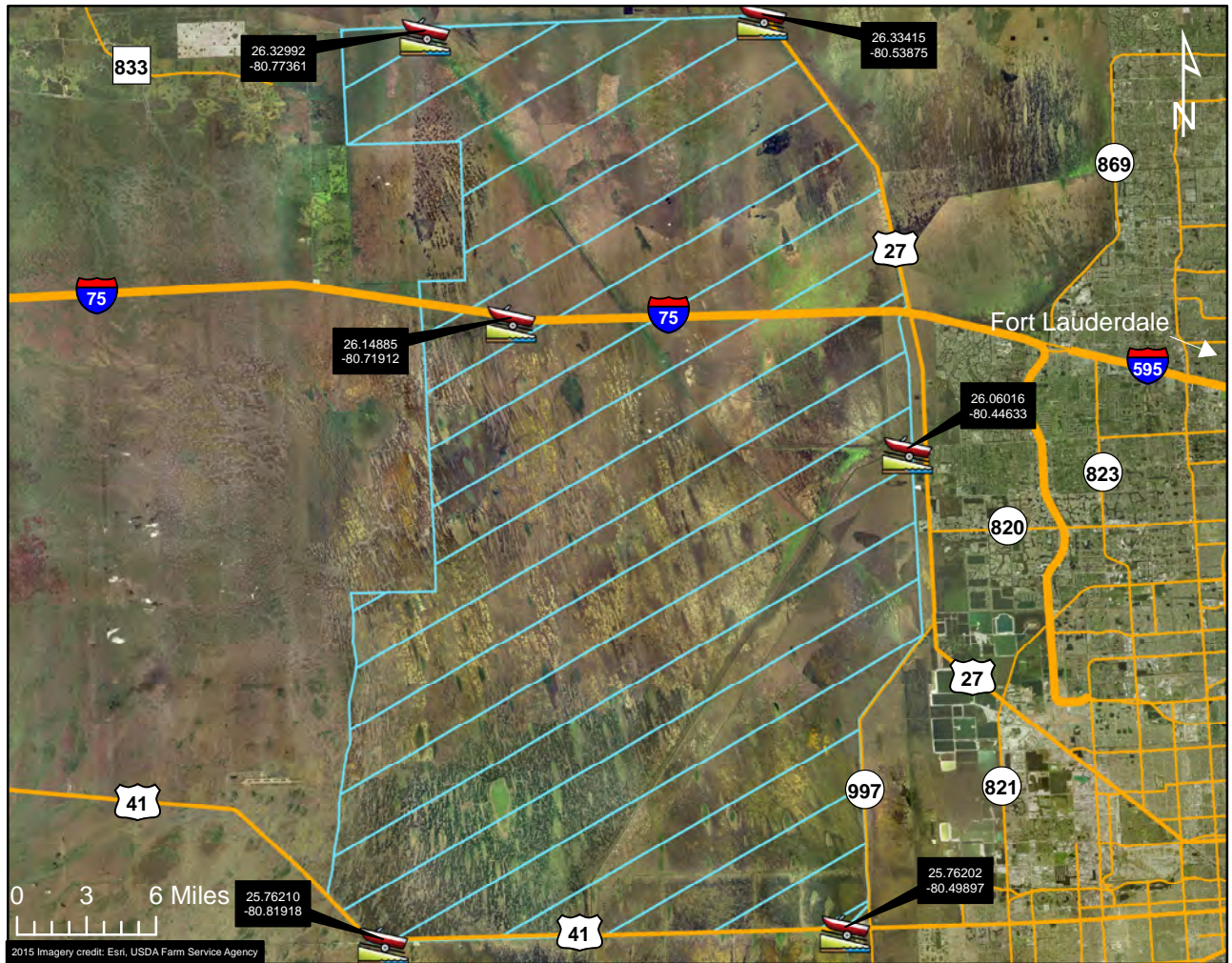


# AMU 404 - WCAs 3A & 3B



## Legend

-  Fort Lauderdale
-  Public Boat Ramp
-  Road
-  Harvest Unit



### HARVEST UNIT DESCRIPTION:



The state-owned or leased lands located within the boundaries of the Everglades and Francis S. Taylor Wildlife Management Area in Broward and Dade counties, and otherwise known as Water Conservation Areas 3A and 3B. Map does not show all accessible public boat ramps; for a full list visit: [myfwc.com/boatramps](http://myfwc.com/boatramps). This map is offered as a courtesy to familiarize participants with the general location of the harvest unit. Please refer to your permit for full details of the harvest unit description and boundary.



# AMU 405 - Holey Land WMA



## Legend

- ★ Belle Glade
-  Public Boat Ramp
- Road
-  Harvest Unit

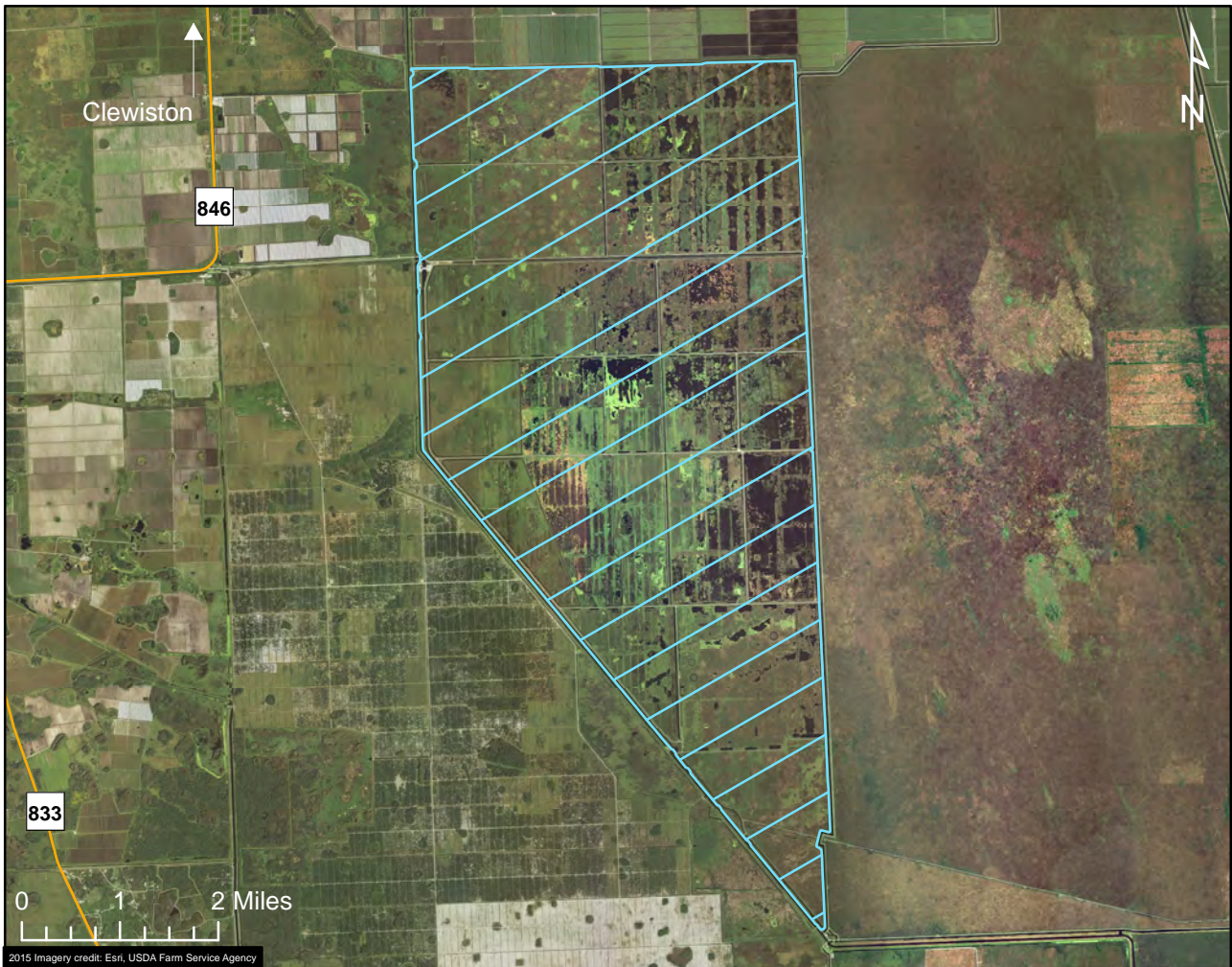
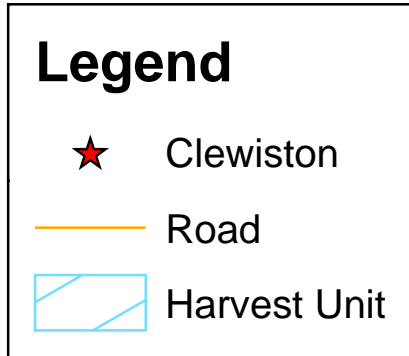
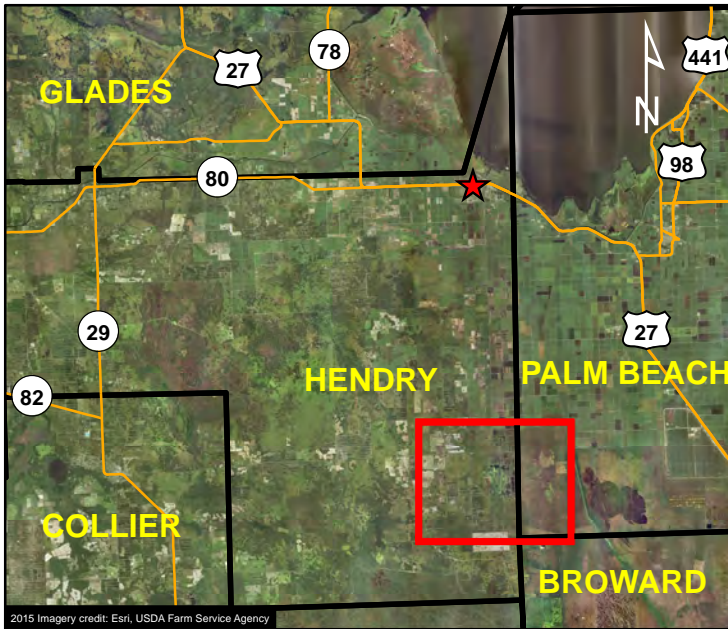


### **HARVEST UNIT DESCRIPTION:**

The state-owned or leased lands located within the boundaries of the Holey Land Wildlife Management Area in Palm Beach County. This map is offered as a courtesy to familiarize participants with the general location of the harvest unit. Please refer to your permit for full details of the harvest unit description and boundary.



# AMU 406 - STA-5

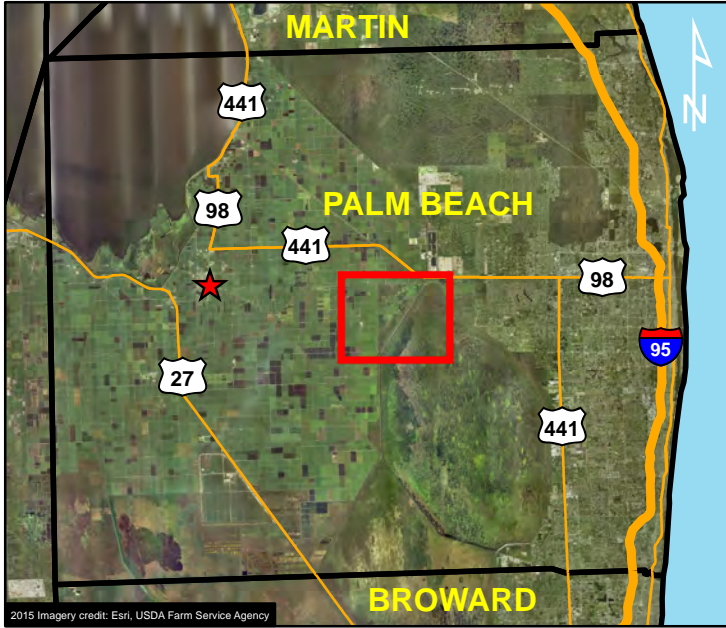


## **HARVEST UNIT DESCRIPTION:**

The South Florida Water Management District lands known as Stormwater Treatment Area 5 (STA-5) in Hendry County. This map is offered as a courtesy to familiarize participants with the general location of the harvest unit. Please refer to your permit for full details of the harvest unit description and boundary.



# AMU 407 - STA-1W North



### Legend

- ★ Belle Glade
- Road
- ▨ Restricted Area
- ▭ Harvest Unit

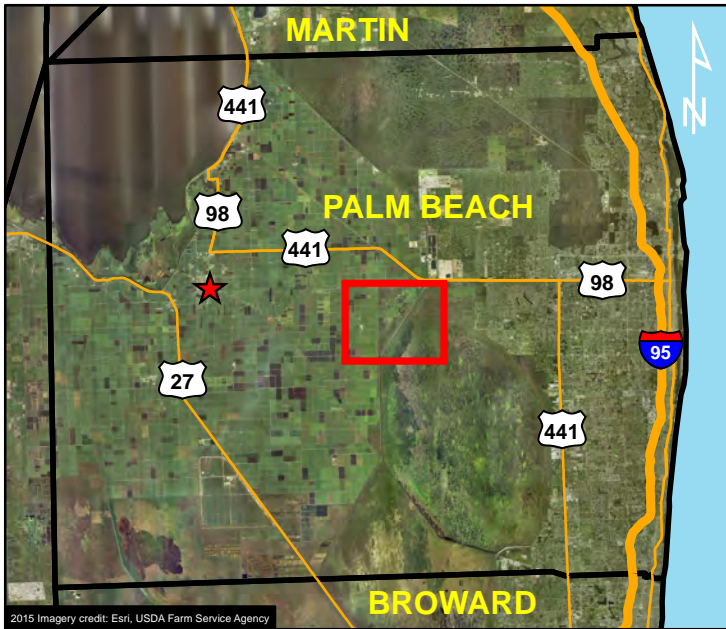


### **HARVEST UNIT DESCRIPTION:**

The South Florida Water Management District lands known as Stormwater Treatment Area 1W North (STA-1W North) in Palm Beach County; including cells 5A and 5B only. This map is offered as a courtesy to familiarize participants with the general location of the harvest unit. Please refer to your permit for full details of the harvest unit description and boundary.



# AMU 408 - STA-1W South



### Legend

- ★ Belle Glade
- Road
- ▨ Restricted Area
- ▭ Harvest Unit

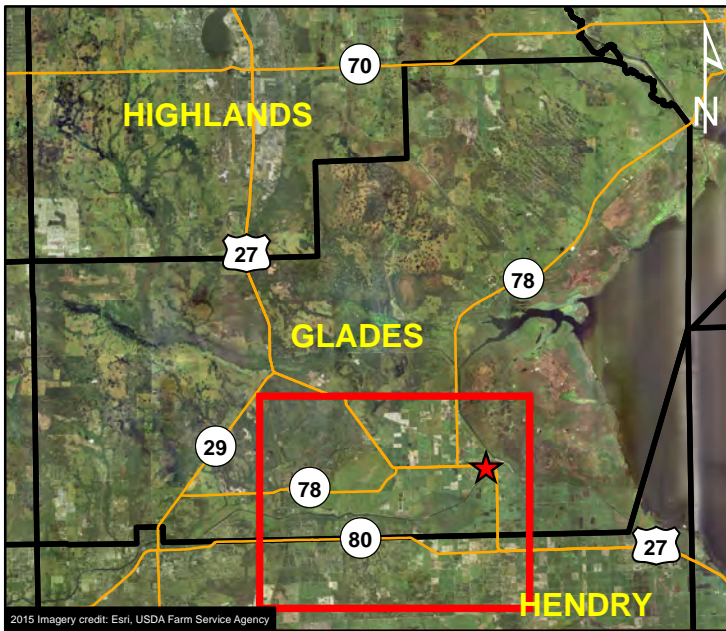


### **HARVEST UNIT DESCRIPTION:**






The South Florida Water Management District lands known as Stormwater Treatment Area 1W South (STA-1W South) in Palm Beach County; including cells 1B, 2B, and 4 only. This map is offered as a courtesy to familiarize participants with the general location of the harvest unit. Please refer to your permit for full details of the harvest unit description and boundary.

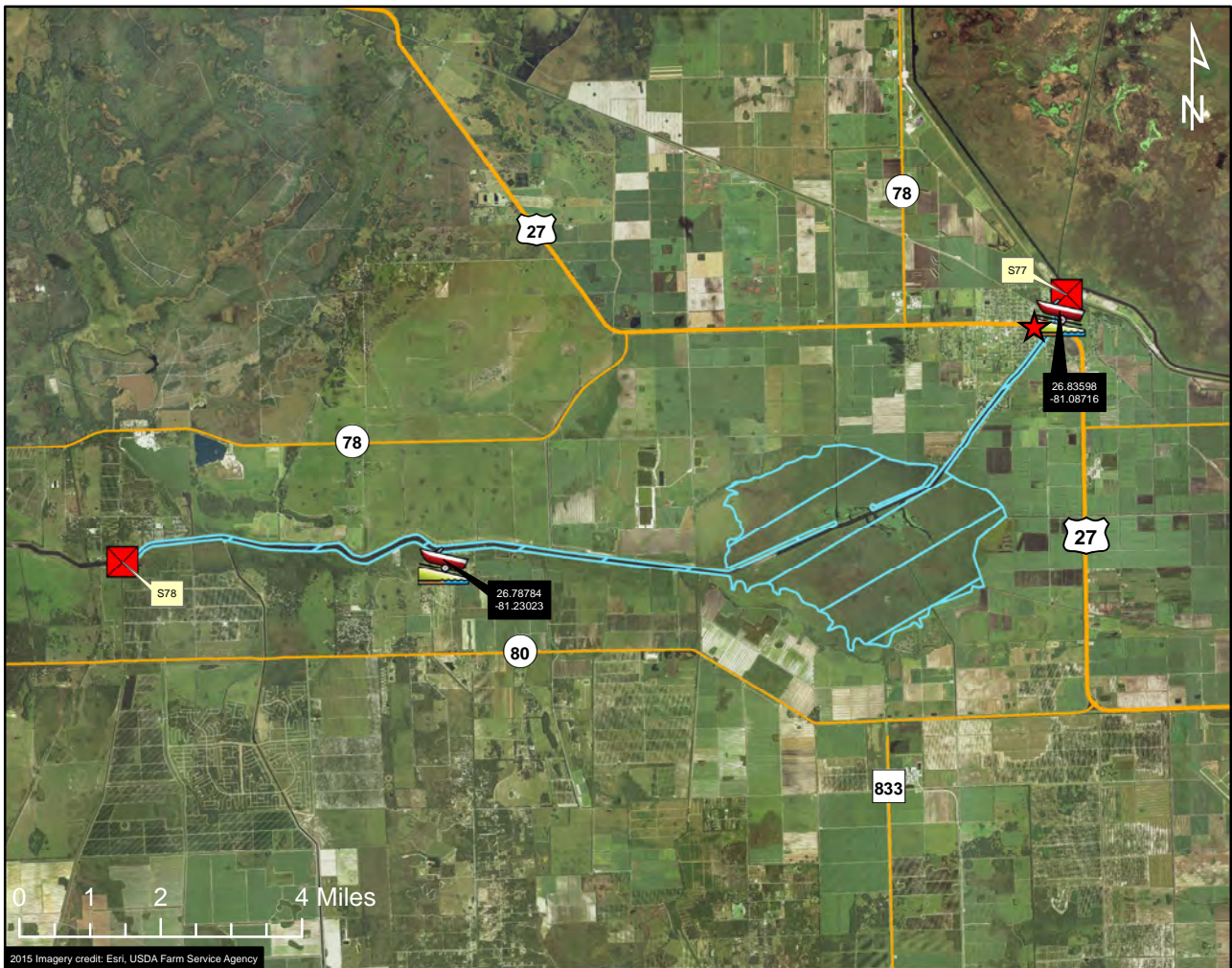


# AMU 409 - Lake Hicpochee



## Legend

-  Moore Haven
-  Public Boat Ramp
-  Water Control Structure
-  Road
-  Harvest Unit

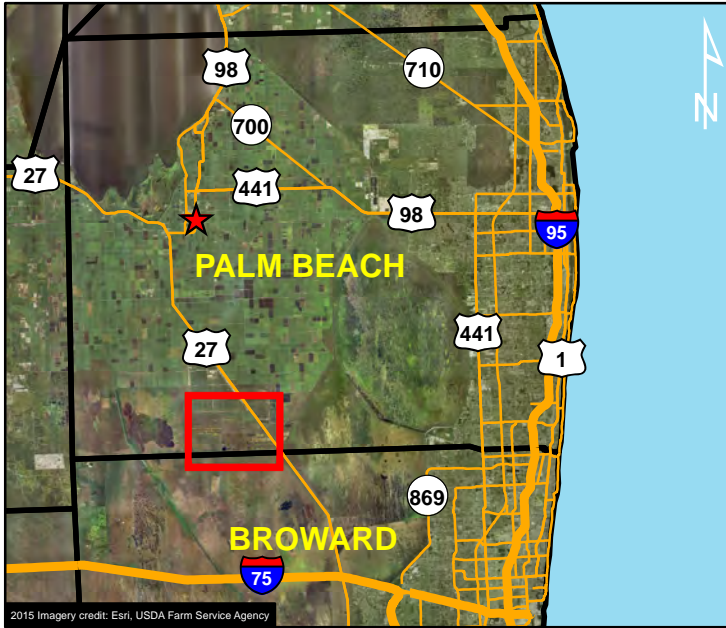


### **HARVEST UNIT DESCRIPTION:**

The state-owned waters located within the water line of Lake Hicpochee and that portion of the Caloosahatchee River Canal (C43) from the S77 structure at Moore Haven west to the S78 structure at Ortona in Glades County; excluding more than 50 yards up any connecting natural or manmade waterway. Map does not show all accessible public boat ramps; for a full list visit: [myfwc.com/boatramps](http://myfwc.com/boatramps). This map is offered as a courtesy to familiarize participants with the general location of the harvest unit. Please refer to your permit for full details of the harvest unit description and boundary.

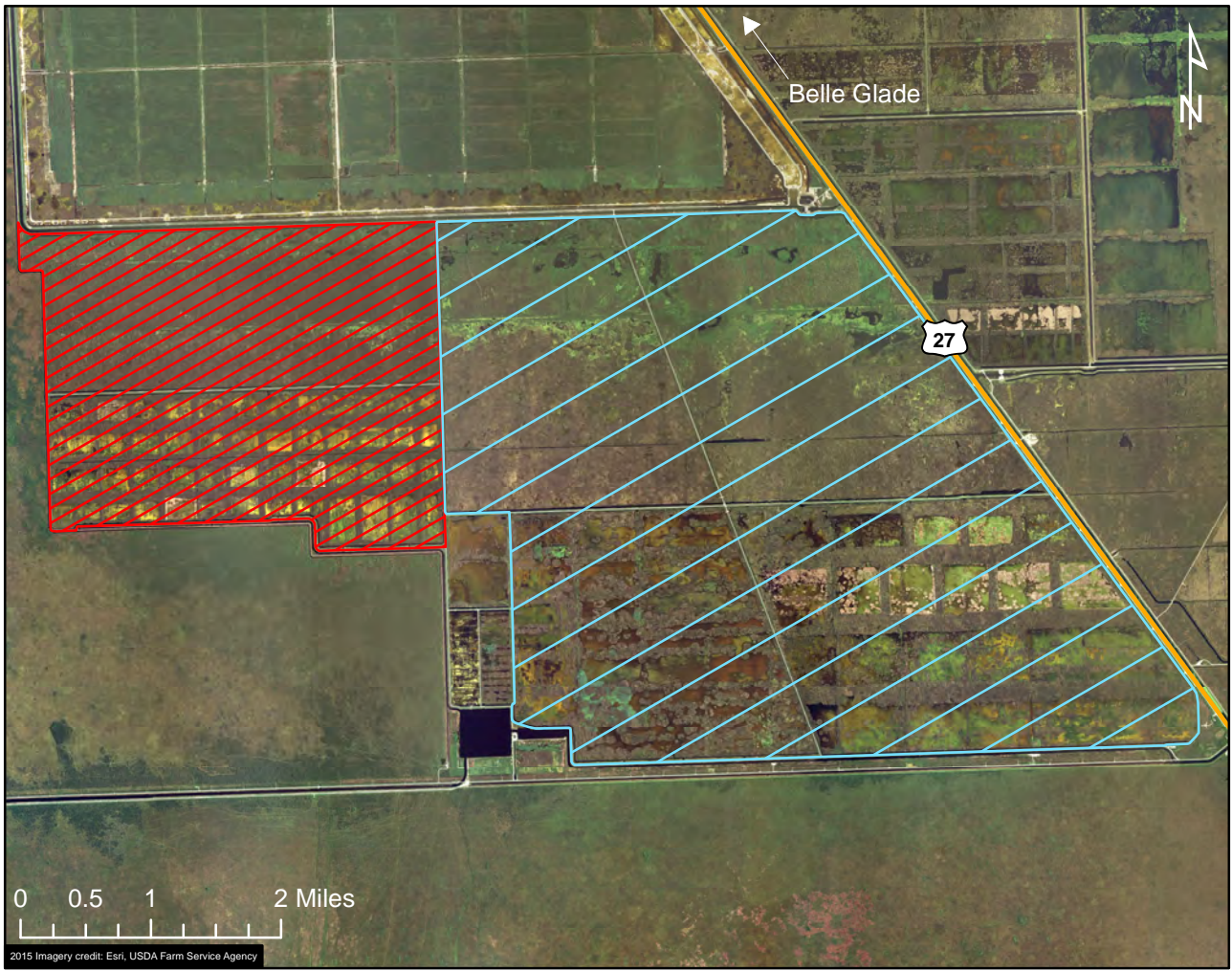


# AMU 413 - STA-3/4 East



## Legend

- ★ Belle Glade
- Road
- ▨ Restricted Area
- ▭ Harvest Unit

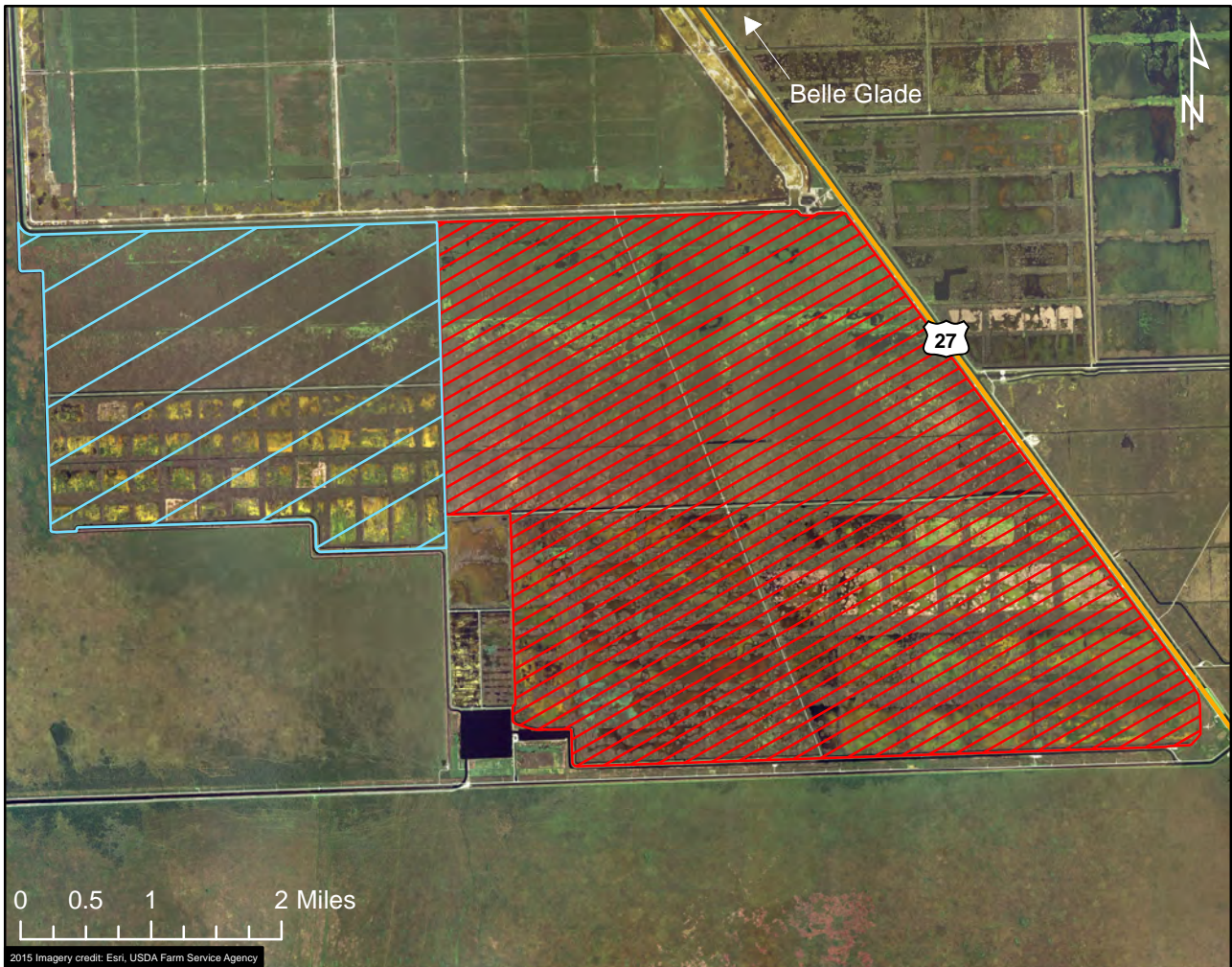
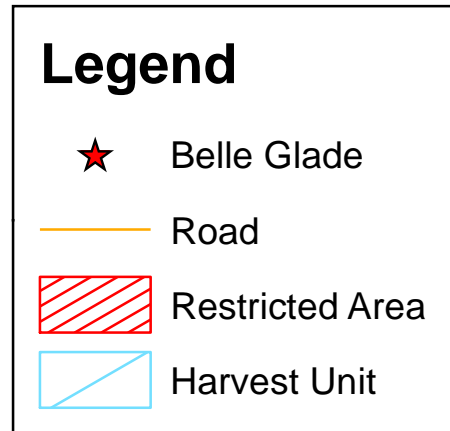
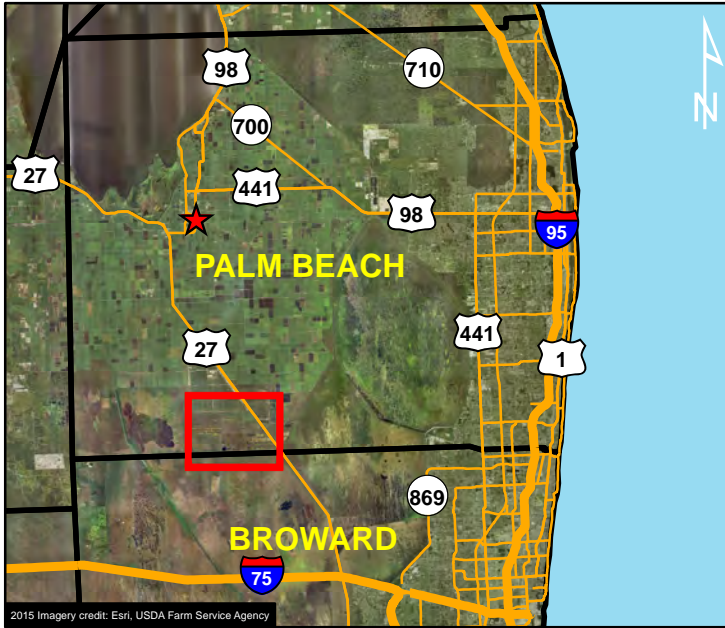


### **HARVEST UNIT DESCRIPTION:**

The South Florida Water Management District lands known as Stormwater Treatment Area 3/4 (STA-3/4) in Palm Beach County; including cells 1A, 1B, 2A and 2B only. This map is offered as a courtesy to familiarize participants with the general location of the harvest unit. Please refer to your permit for full details of the harvest unit description and boundary.



# AMU 414 - STA-3/4 West

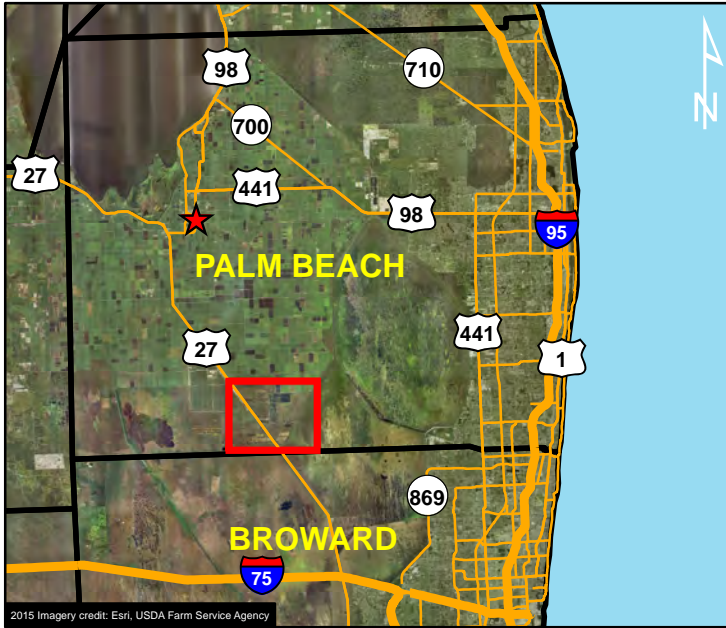


## **HARVEST UNIT DESCRIPTION:**

The South Florida Water Management District lands known as Stormwater Treatment Area 3/4 (STA-3/4) in Palm Beach County; including cells 3A, 3B and the west levee of 2A only. This map is offered as a courtesy to familiarize participants with the general location of the harvest unit. Please refer to your permit for full details of the harvest unit description and boundary.

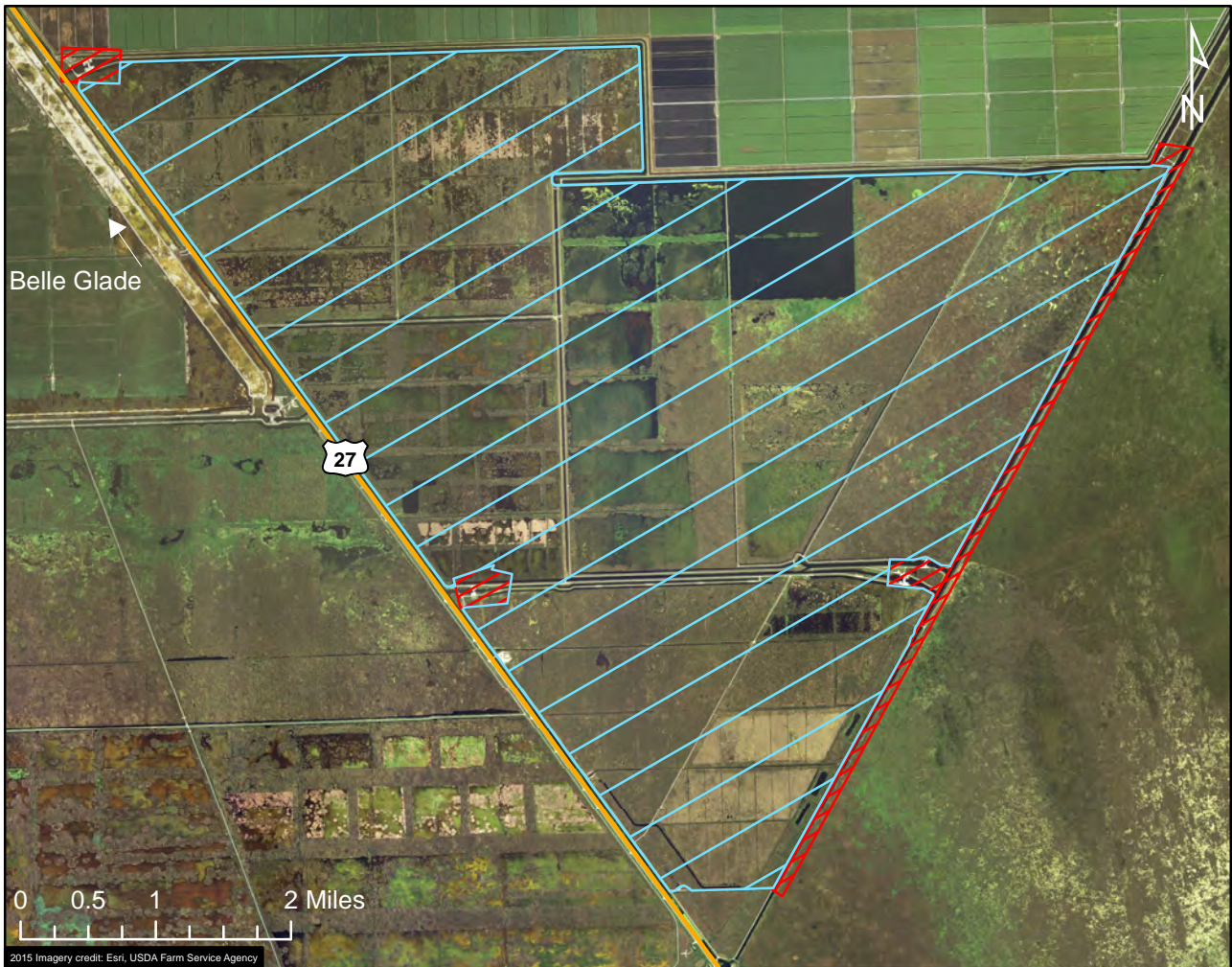


# AMU 415 - STA-2



## Legend

- ★ Belle Glade
- Road
- ▨ restricted area
- ▭ Harvest Unit



### **HARVEST UNIT DESCRIPTION:**

The South Florida Water Management District lands known as Stormwater Treatment Area 2 (STA-2) in Palm Beach County. This harvest unit is subject to South Florida Water Management District restrictions. This map is offered as a courtesy to familiarize participants with the general location of the harvest unit. Please refer to your permit for full details of the harvest unit description and boundary.



### **County-wide Alligator Harvest Unit Maps**

These maps are offered as a courtesy to familiarize participants with the general location of each county-wide harvest unit. The harvest areas listed in each county-wide map are offered as suggestions and are not intended to limit additional accessible areas available for harvest. Some harvest units are more restrictive than others so please refer to your permit for full details of the harvest unit description, boundary, and harvest period.

To search for additional bodies of water that have been hunted under a county-wide permit in the past, please use the “Statewide Alligator Harvest Data Search” resource located on the MyFWC.com website here: <http://myfwc.com/wildlifehabitats/managed/alligator/harvest/data-search/>.