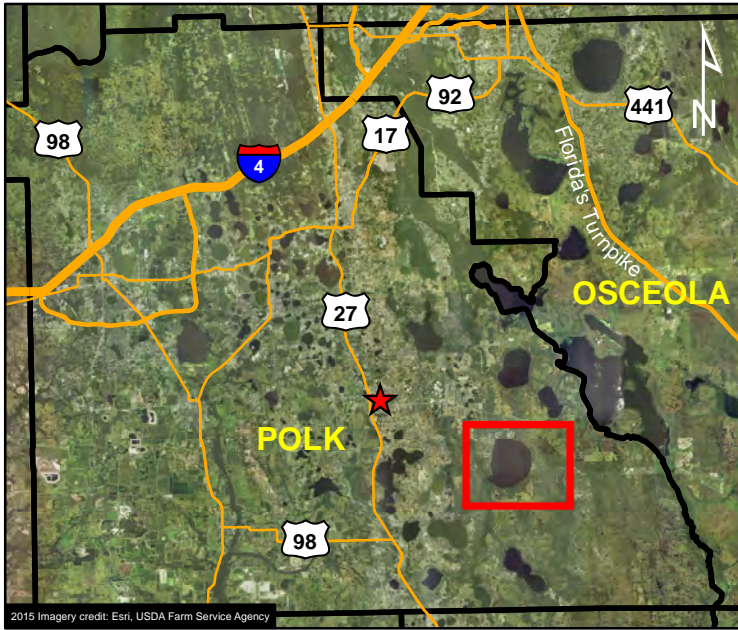


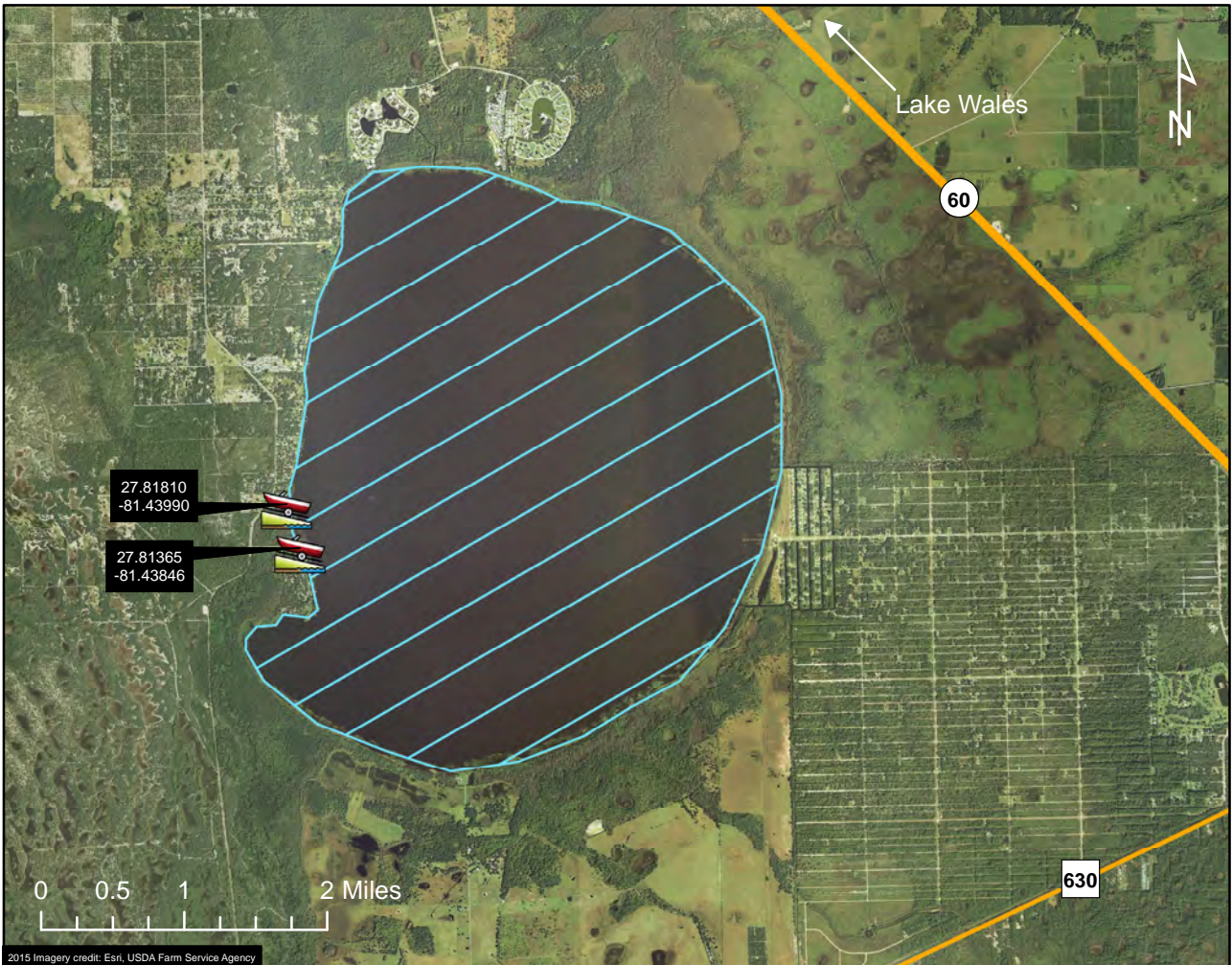


AMU 115 - Lake Weohyakapka



Legend

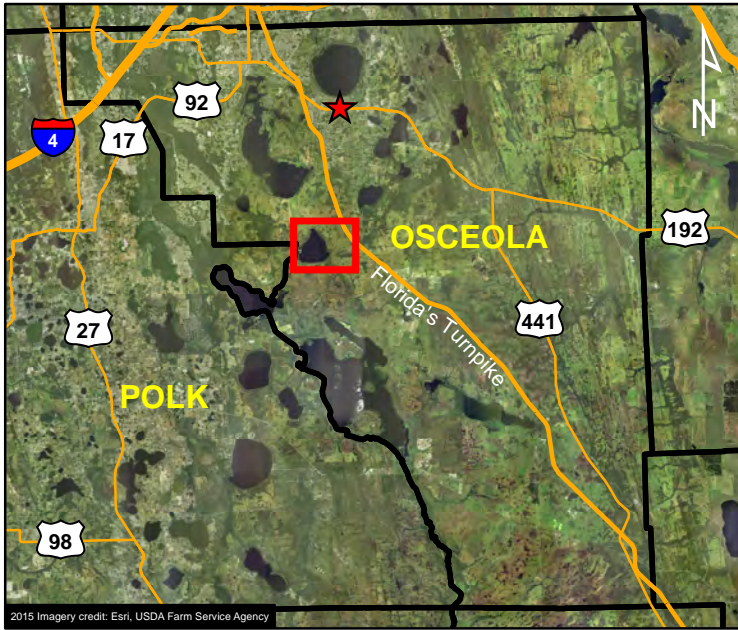
- ★ Lake Wales
-  Public Boat Ramp
- Road
-  Harvest Unit





HARVEST UNIT DESCRIPTION:

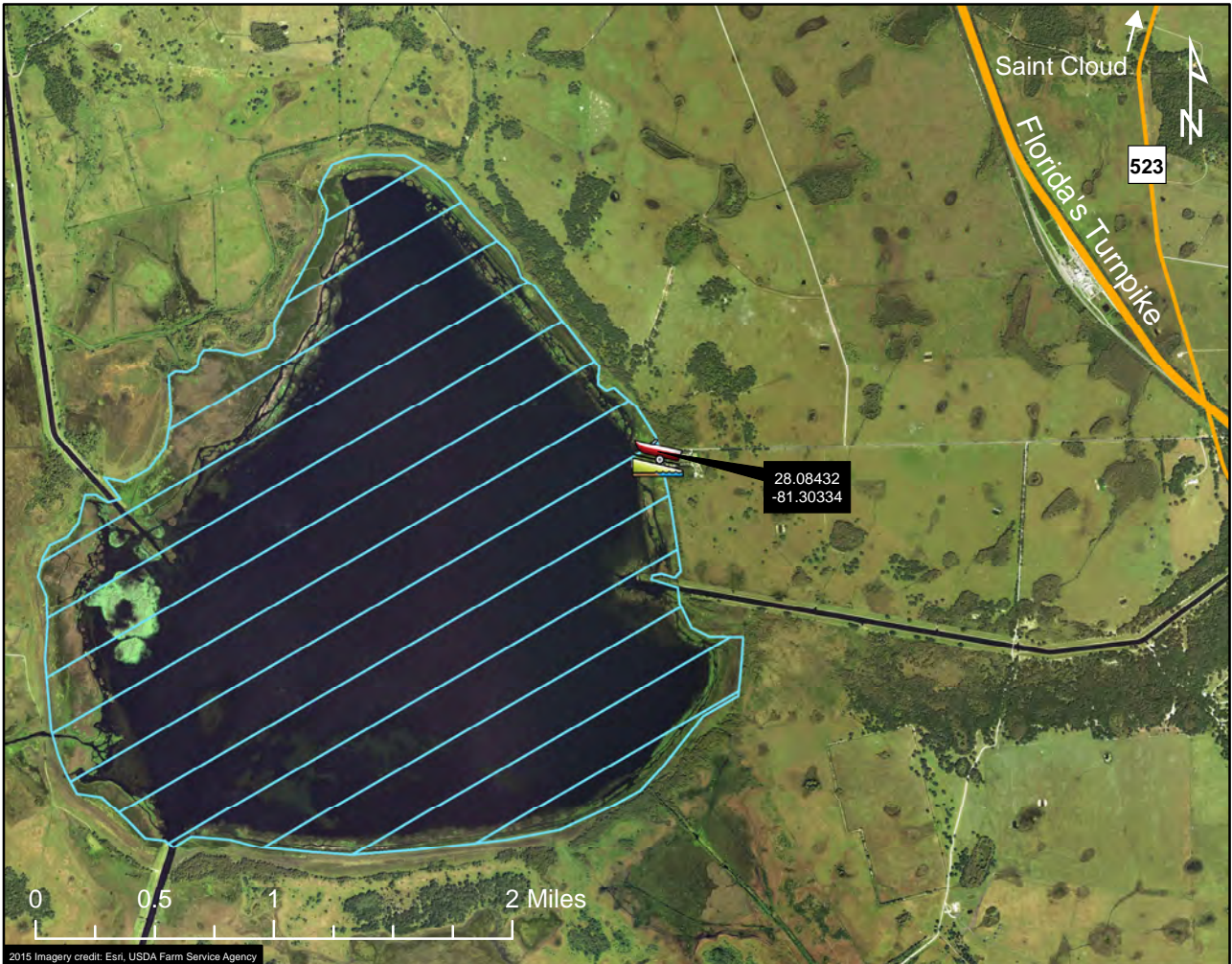
The state-owned waters located within the water line of Lake Weohyakapka in Polk County; south of SR 60 and north of SR 630; excluding more than 50 yards up any connecting natural or manmade waterway. This map is offered as a courtesy to familiarize participants with the general location of the harvest unit. Please refer to your permit for full details of the harvest unit description and boundary.

AMU 116 - Cypress Lake



Legend

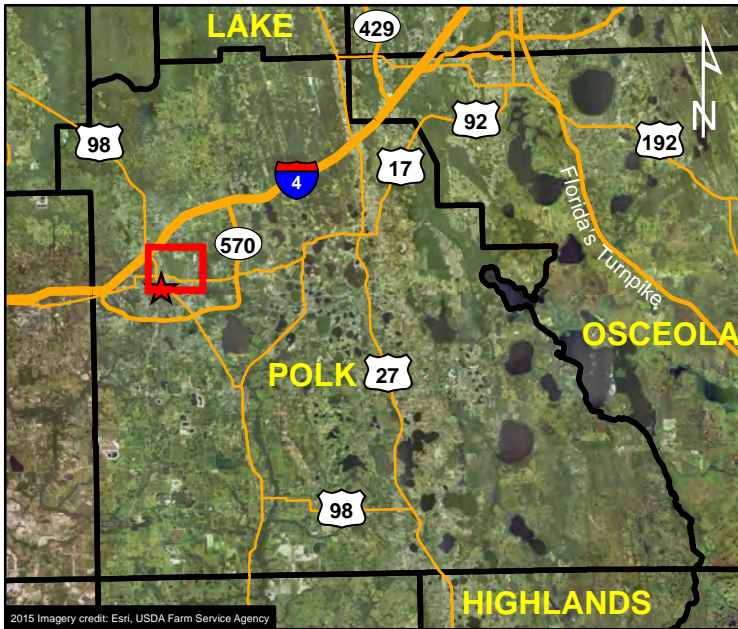
- ★ Saint Cloud
-  Public Boat Ramp
- Road
-  Harvest Unit





HARVEST UNIT DESCRIPTION:

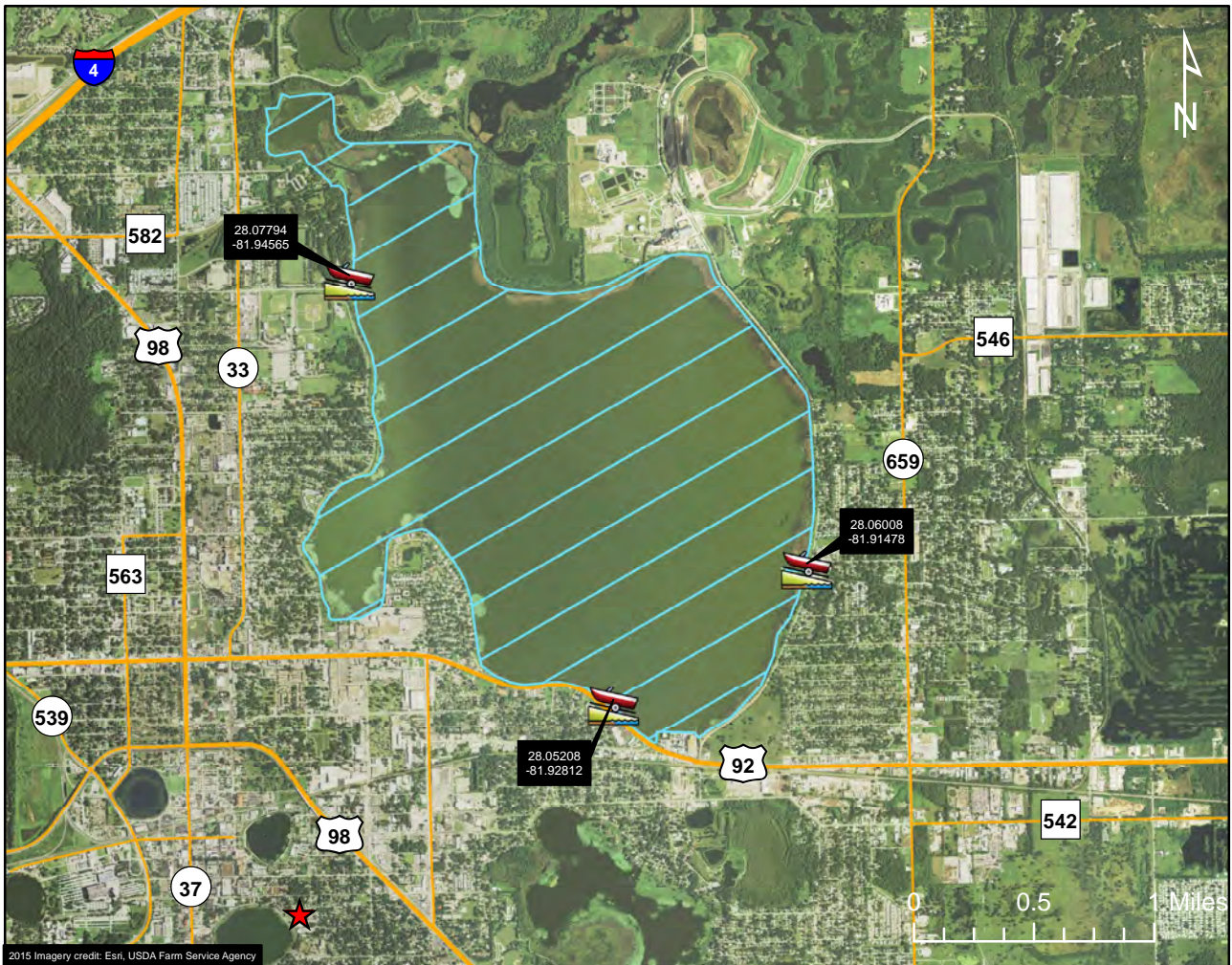
The state-owned waters located within the water line of Cypress Lake in Osceola County; west of CR 523; excluding more than 50 yards up any connecting natural or manmade waterway. This map is offered as a courtesy to familiarize participants with the general location of the harvest unit. Please refer to your permit for full details of the harvest unit description and boundary.

AMU 117 - Lake Parker



Legend

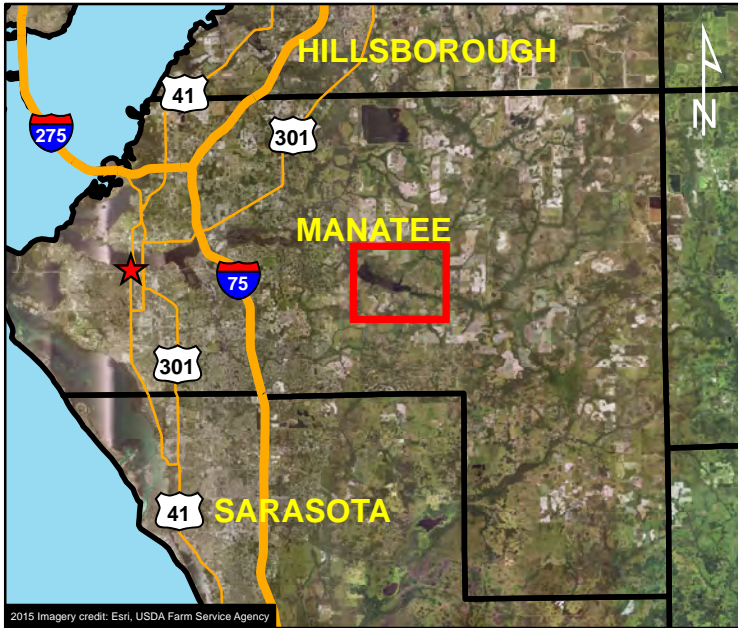
- ★ Lakeland
-  Public Boat Ramp
- Road
-  Harvest Unit






HARVEST UNIT DESCRIPTION:

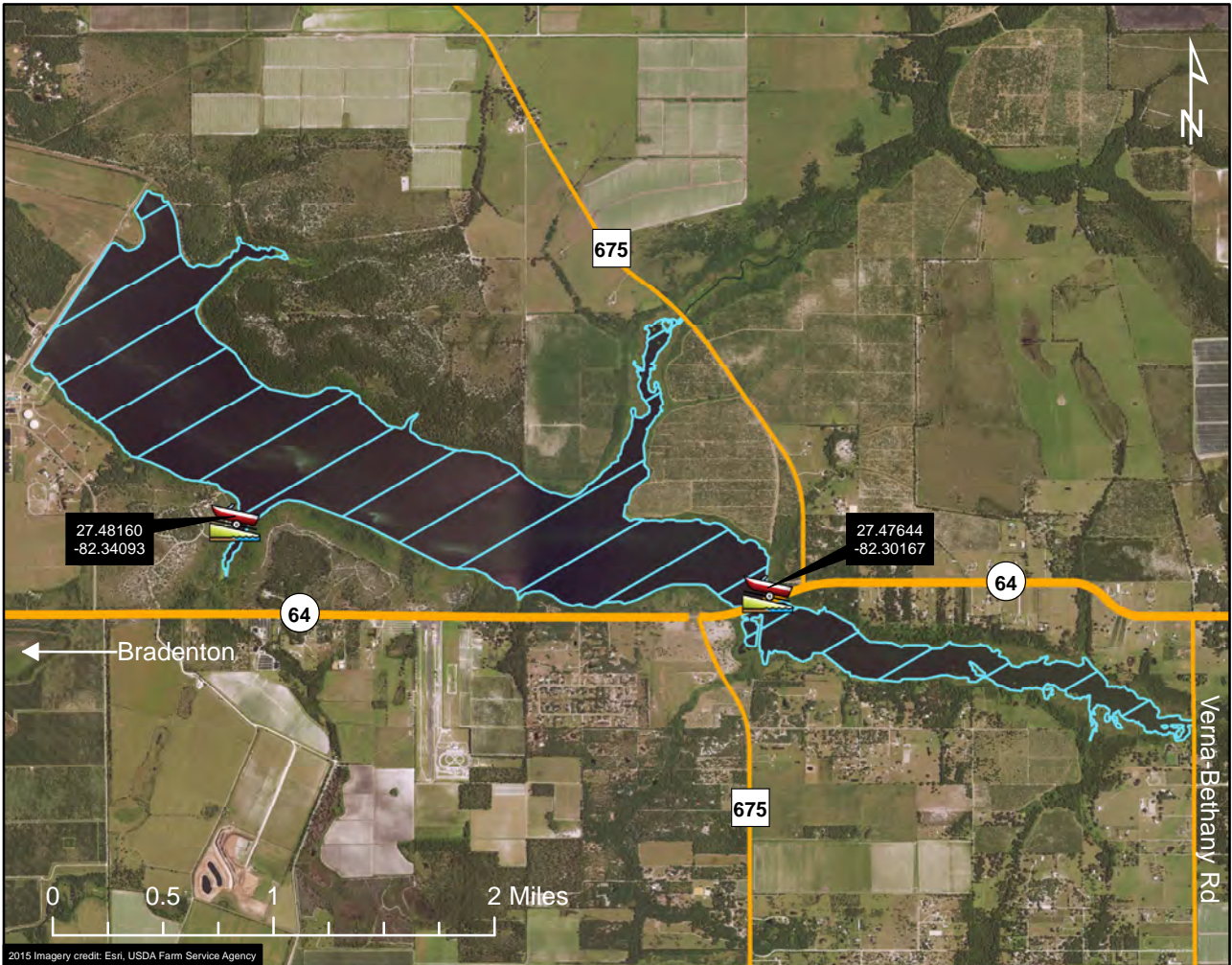
The state-owned waters located within the water line of Lake Parker, Lake Crago, and the Lake Crago canal in Polk County; excluding more than 50 yards up any connecting natural or manmade waterway. This map is offered as a courtesy to familiarize participants with the general location of the harvest unit. Please refer to your permit for full details of the harvest unit description and boundary.

AMU 118 - Lake Manatee



Legend

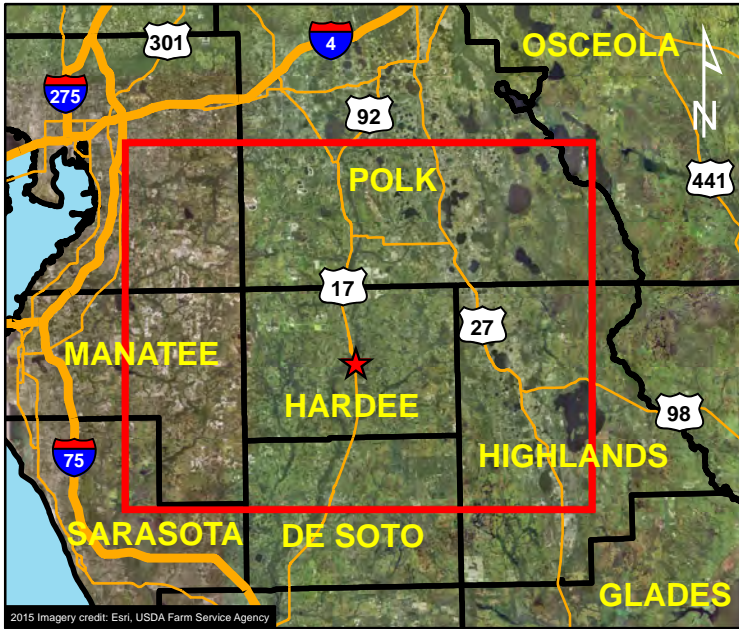
- ★ Bradenton
-  Public Boat Ramp
-  Road
-  Harvest Unit







HARVEST UNIT DESCRIPTION:

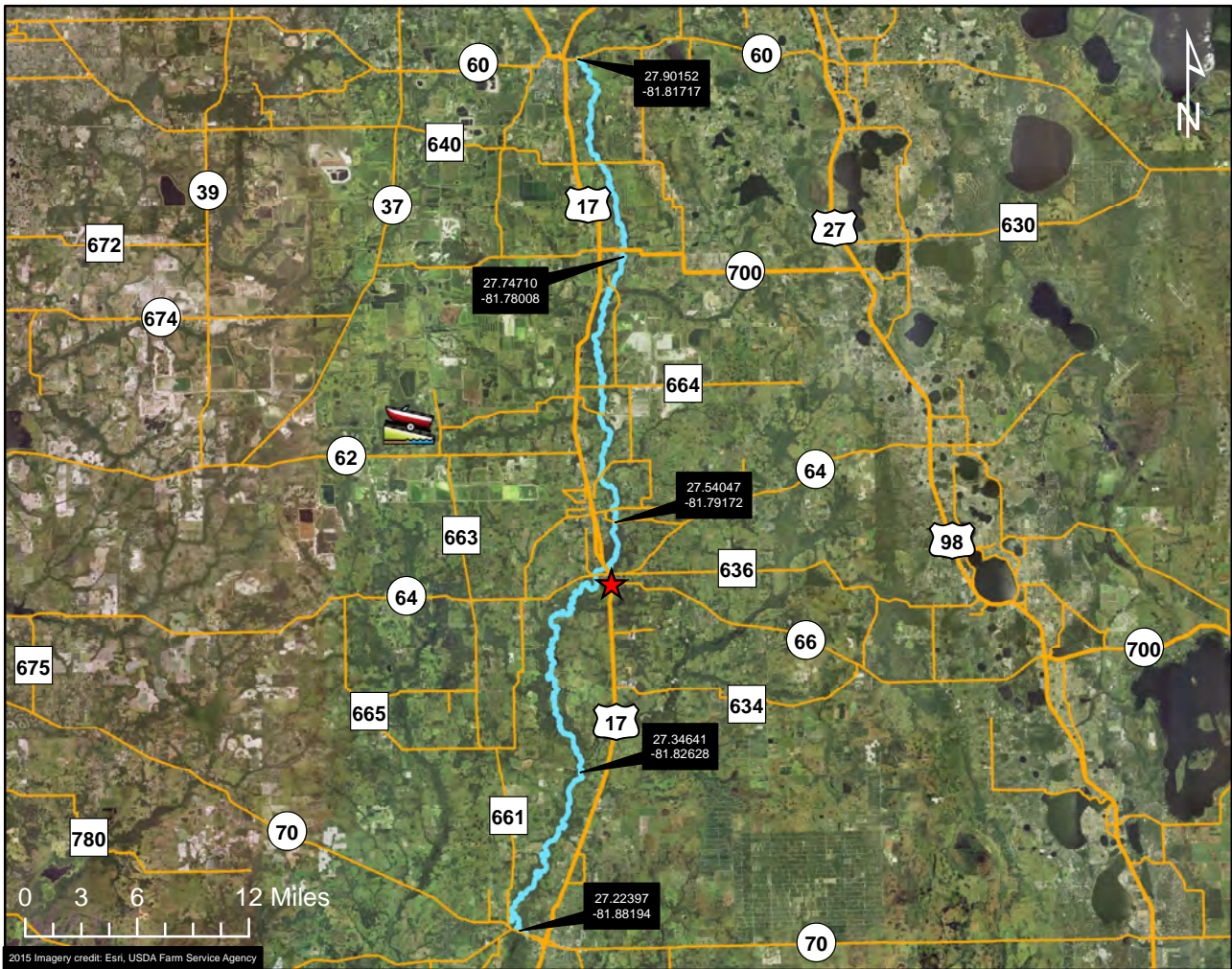
The state-owned waters located within the water line of Lake Manatee in Manatee County; east of Lake Manatee Dam, west of Verna-Bethany Road, and south of CR 675; excluding more than 50 yards up any connecting natural or manmade waterway. This map is offered as a courtesy to familiarize participants with the general location of the harvest unit. Please refer to your permit for full details of the harvest unit description and boundary.

AMU 119 - Peace River North



Legend

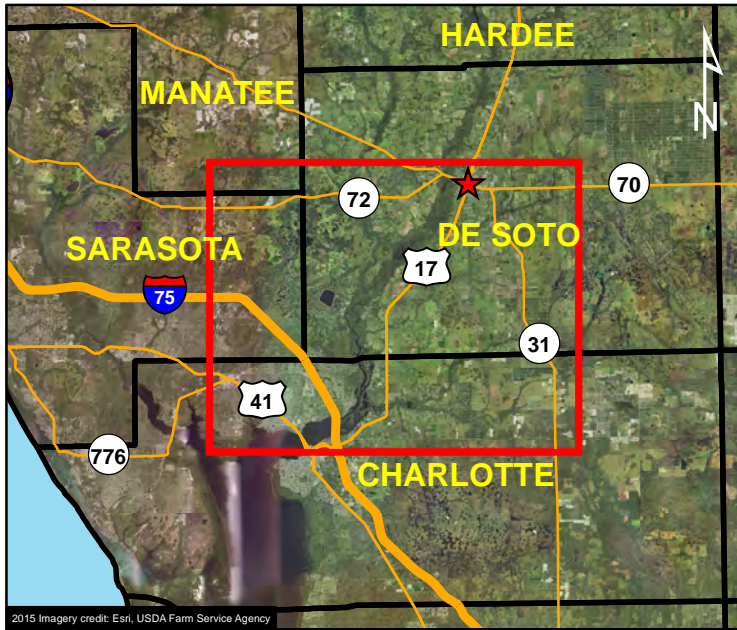
-  Zolfo Springs
-  Public Boat Ramp
-  Road
-  Harvest Unit



HARVEST UNIT DESCRIPTION:



The state-owned waters located within the water line of the Peace River in De Soto, Hardee, and Polk counties; north of SR 70 and south of SR 60; excluding more than 50 yards up any connecting natural or manmade waterway. Map does not show all accessible public boat ramps; for a full list visit: myfwc.com/boatramps. This map is offered as a courtesy to familiarize participants with the general location of the harvest unit. Please refer to your permit for full details of the harvest unit description and boundary.

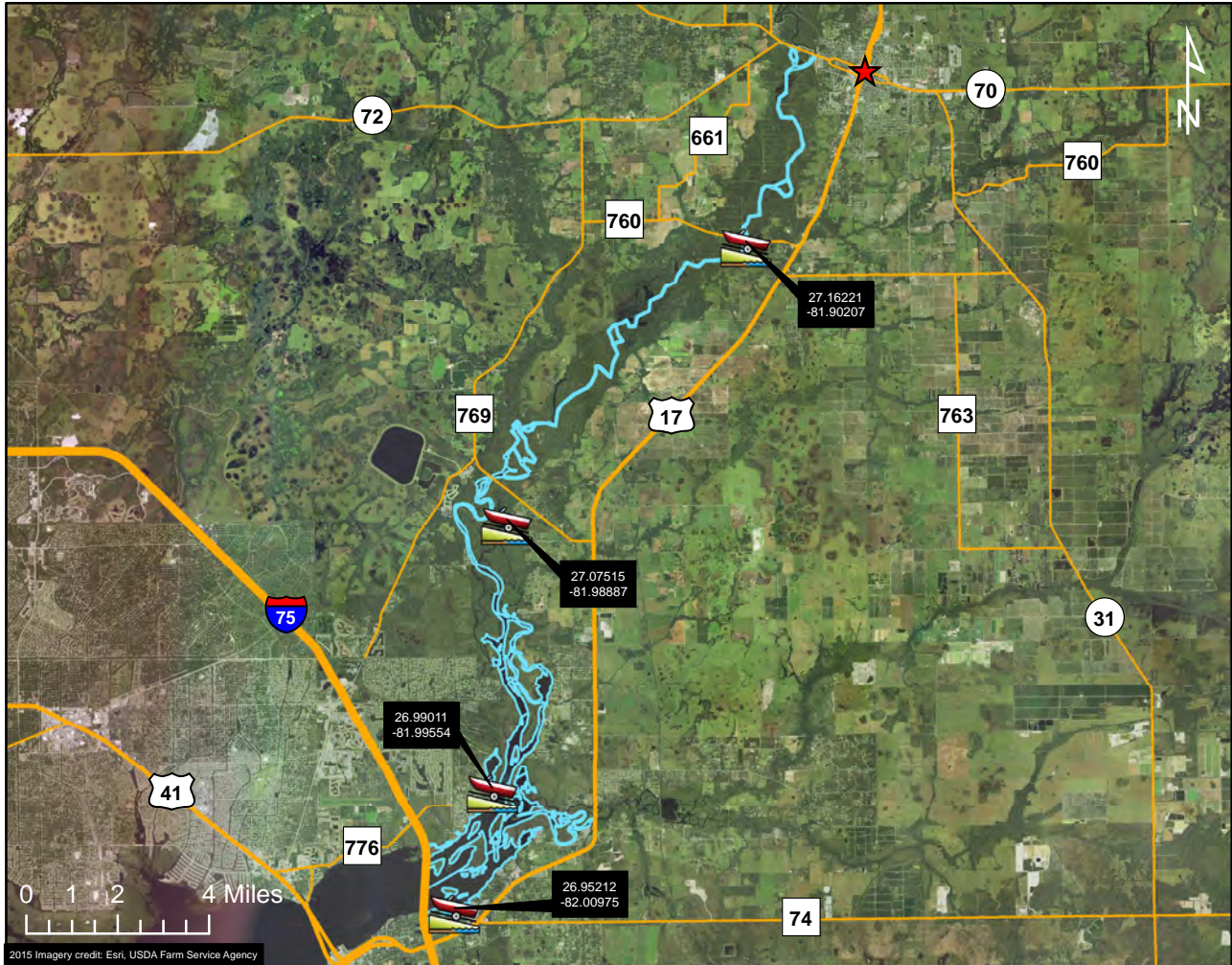
AMU 120 - Peace River South



2015 Imagery credit: Esri, USDA Farm Service Agency

Legend

-  Arcadia
-  Public Boat Ramp
-  Road
-  Harvest Unit

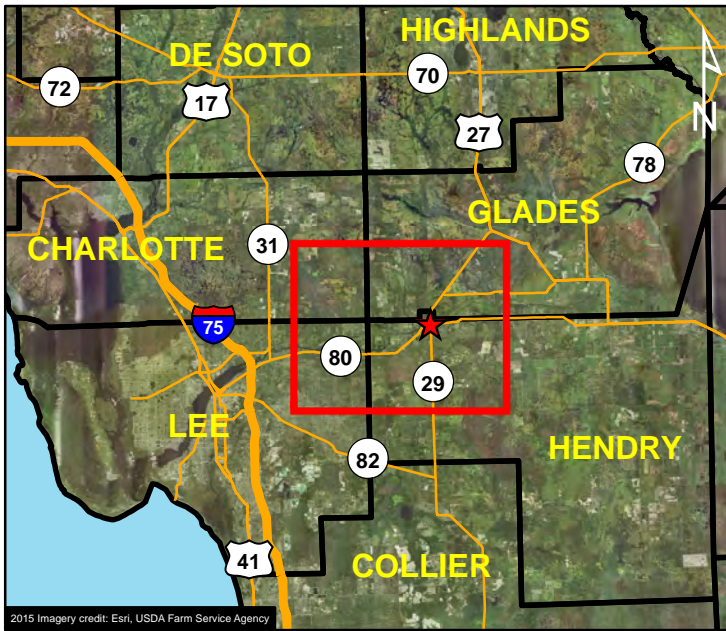


2015 Imagery credit: Esri, USDA Farm Service Agency

HARVEST UNIT DESCRIPTION:

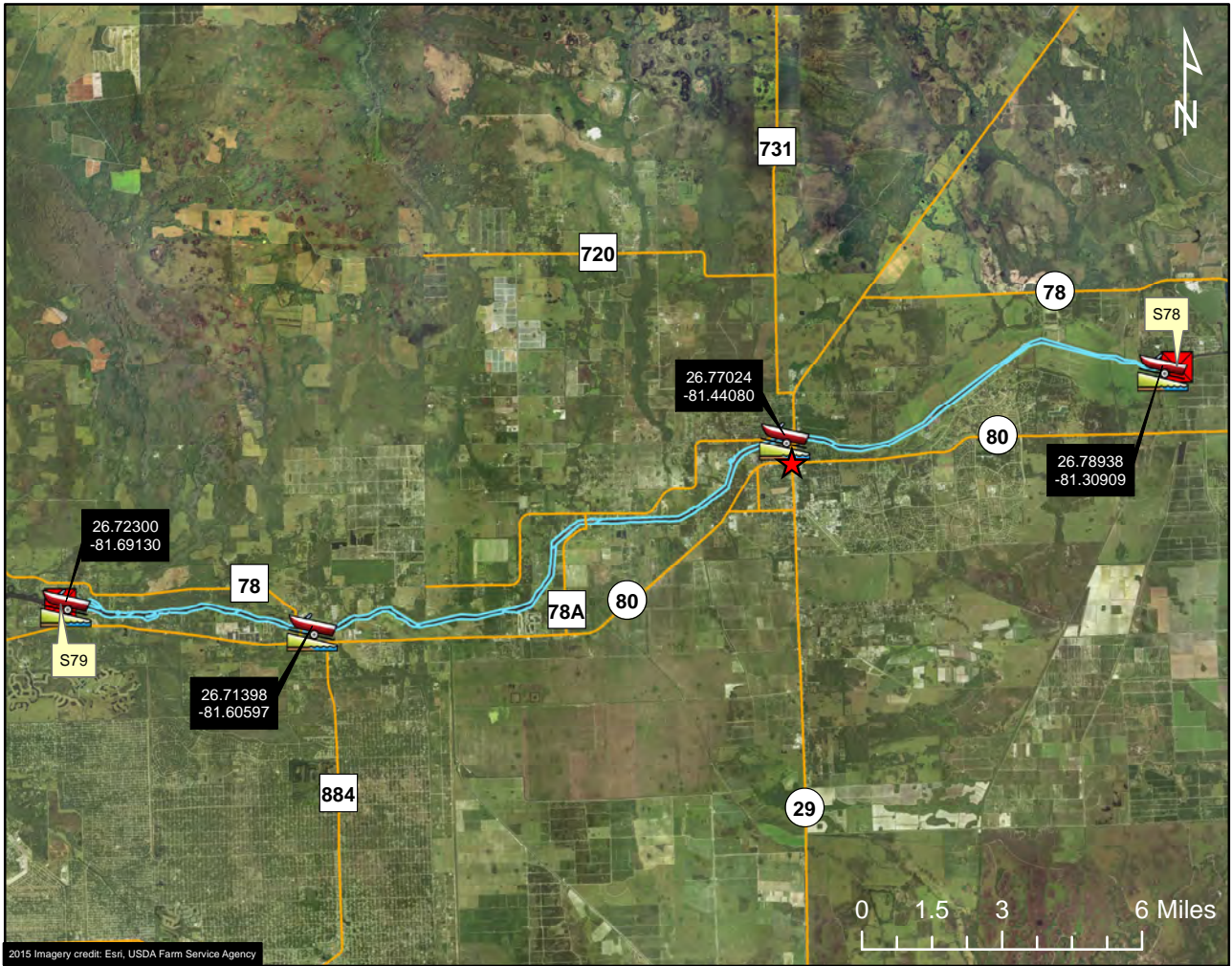
The state-owned waters located within the water line of the Peace River in De Soto and Charlotte counties; south of SR 70 and east of I-75, and including Shell Creek west of US Hwy. 17; excluding more than 50 yards up any connecting natural or manmade waterway. Map does not show all accessible public boat ramps; for a full list visit: myfwc.com/boatramps. This map is offered as a courtesy to familiarize participants with the general location of the harvest unit. Please refer to your permit for full details of the harvest unit description and boundary.

AMU 121 - Caloosahatchee River



Legend

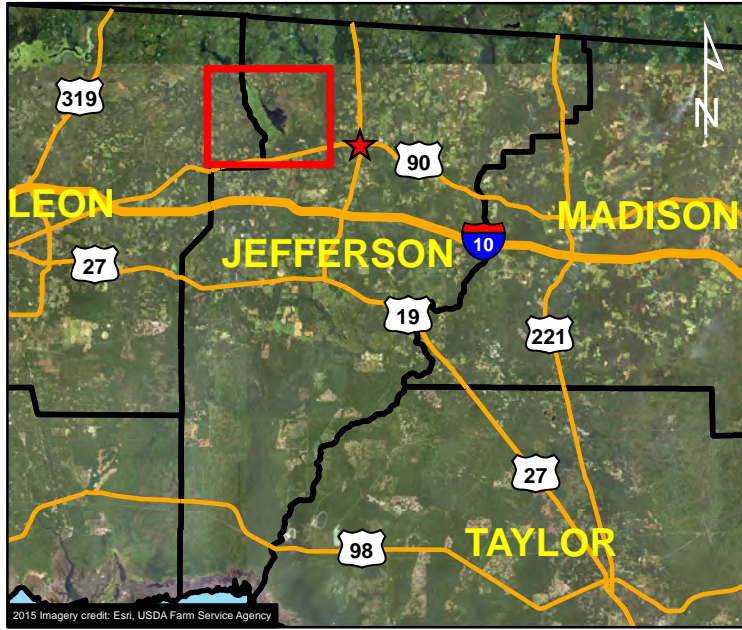
- La Belle
- Public Boat Ramp
- Water Control Structure
- Road
- Harvest Unit





HARVEST UNIT DESCRIPTION:

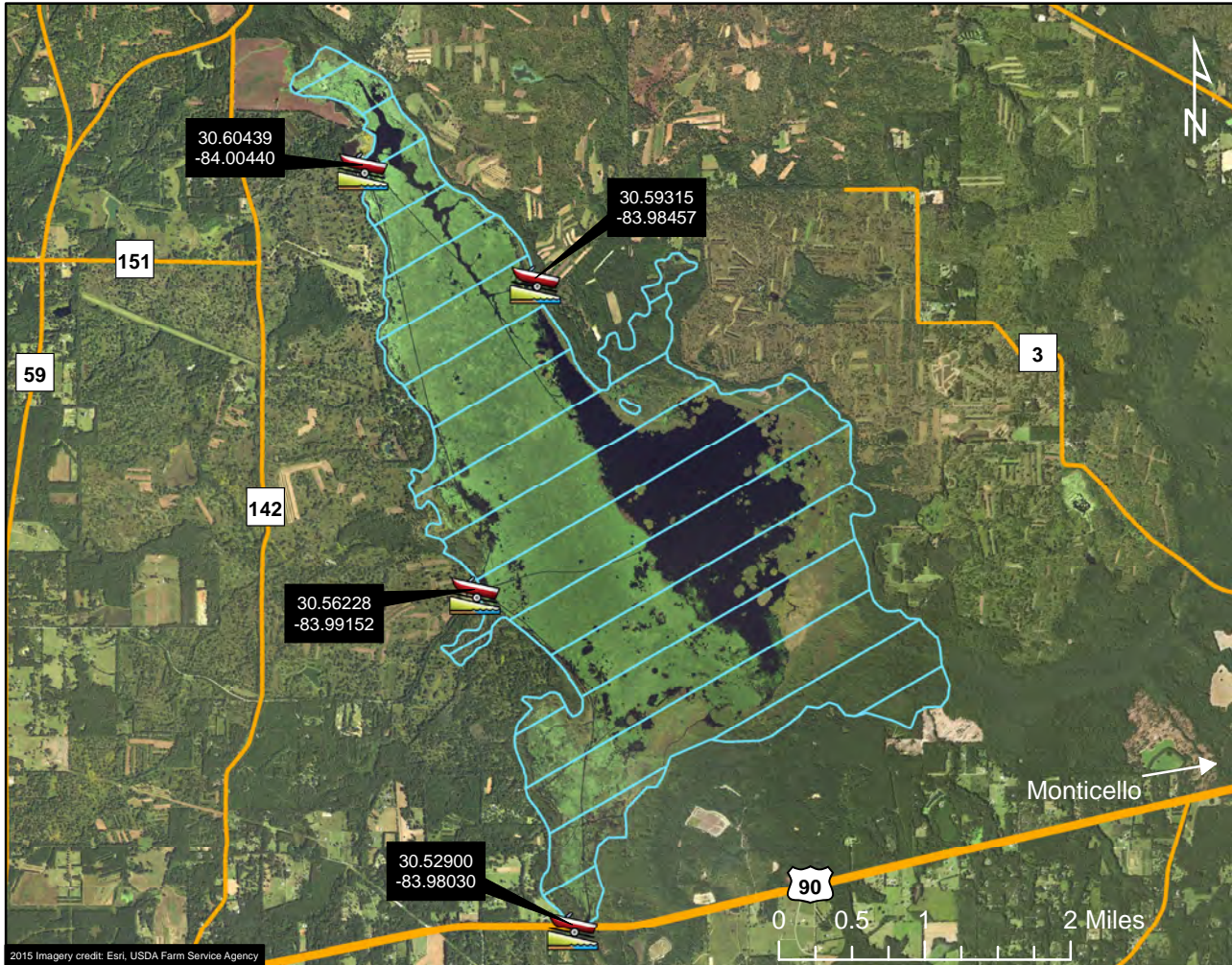
The state-owned waters located within the water line of the Caloosahatchee River in Glades, Hendry, and Lee counties; west of the S78 structure (Ortona Lock) and east of the S79 structure (Franklin Lock), excluding more than 50 yards up any connecting natural or manmade waterway. This map is offered as a courtesy to familiarize participants with the general location of the harvest unit. Please refer to your permit for full details of the harvest unit description and boundary.

AMU 303 - Lake Miccosukee



Legend

- ★ Monticello
-  Public Boat Ramp
- Road
-  Harvest Unit



HARVEST UNIT DESCRIPTION:

The state-owned waters located within the water line of Lake Miccosukee in Jefferson and Leon counties; north of US Hwy. 90; excluding more than 50 yards up any connecting natural or manmade waterway. This map is offered as a courtesy to familiarize participants with the general location of the harvest unit. Please refer to your permit for full details of the harvest unit description and boundary.

AMU 306 - Wacissa River



Legend



Public Boat Ramp



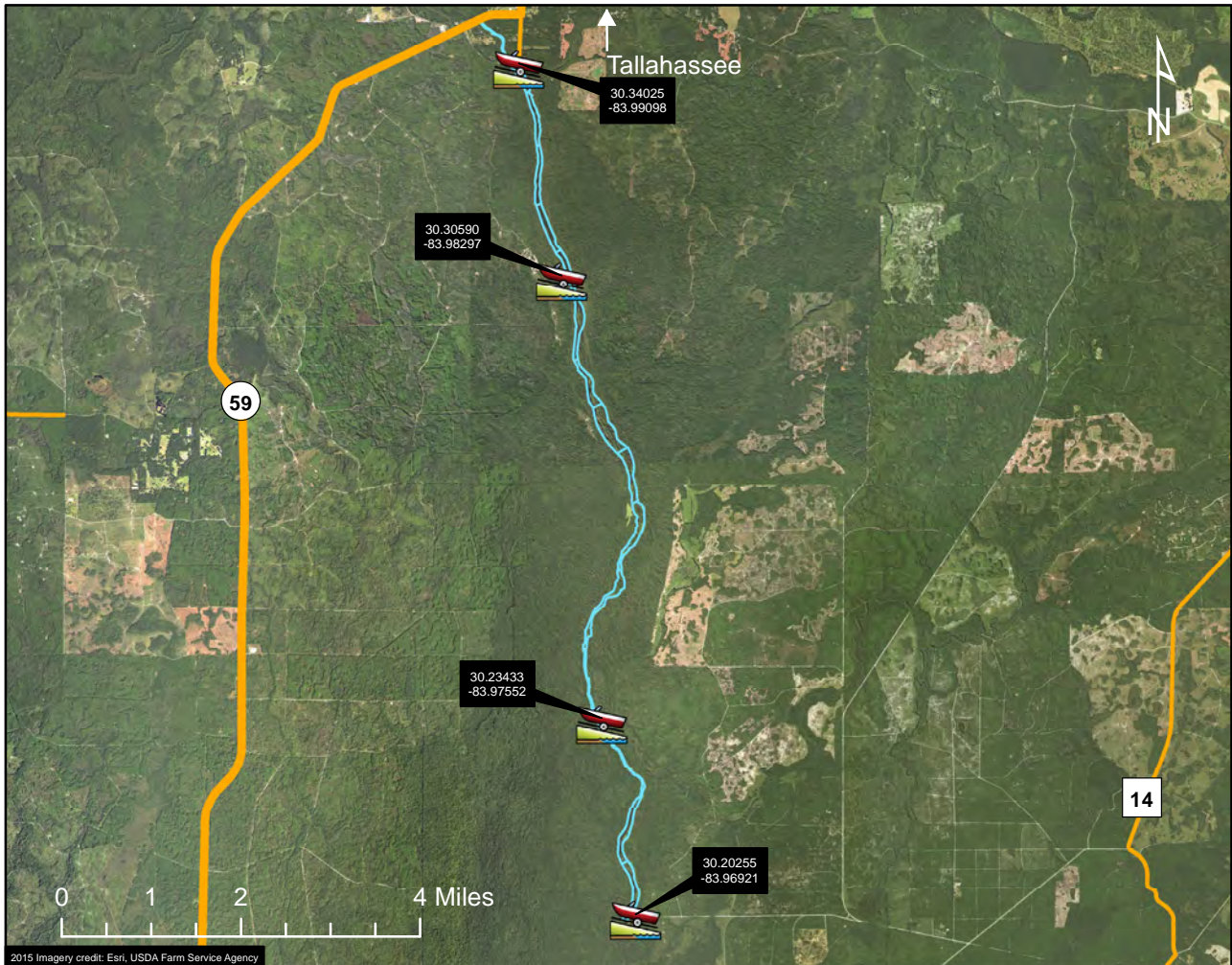
Tallahassee



Road



Harvest Unit



HARVEST UNIT DESCRIPTION:

The state-owned waters located within the water line of Wacissa River in Jefferson County, from Goose Pasture north to SR 59; excluding more than 50 yards up any connecting natural or manmade waterway. This map is offered as a courtesy to familiarize participants with the general location of the harvest unit. Please refer to your permit for full details of the harvest unit description and boundary.

County-wide Alligator Harvest Unit Maps

These maps are offered as a courtesy to familiarize participants with the general location of each county-wide harvest unit. The harvest areas listed in each county-wide map are offered as suggestions and are not intended to limit additional accessible areas available for harvest. Some harvest units are more restrictive than others so please refer to your permit for full details of the harvest unit description, boundary, and harvest period.

To search for additional bodies of water that have been hunted under a county-wide permit in the past, please use the “Statewide Alligator Harvest Data Search” resource located on the MyFWC.com website here: <http://myfwc.com/wildlifehabitats/managed/alligator/harvest/data-search/>.