

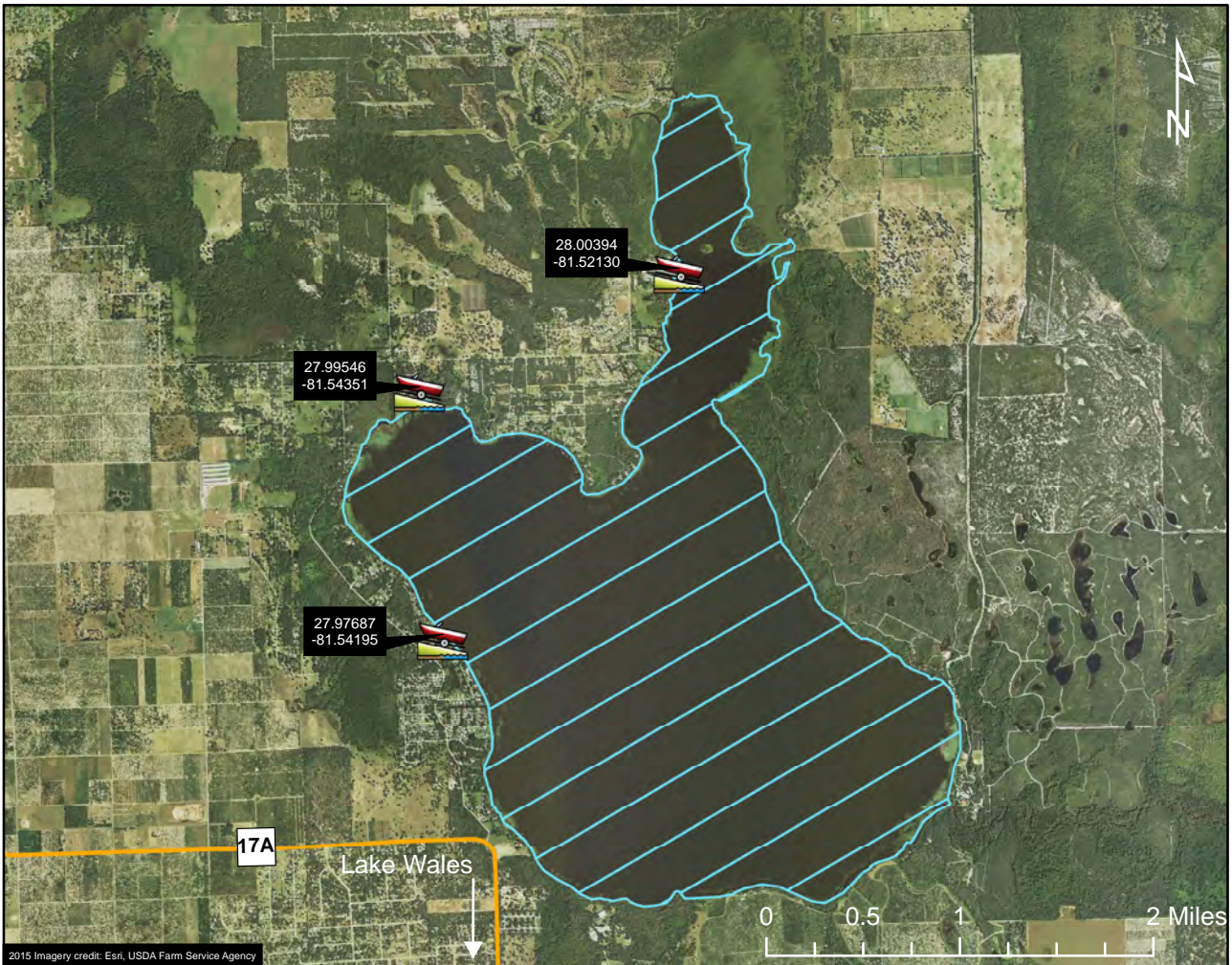


AMU 101 - Lake Pierce



Legend

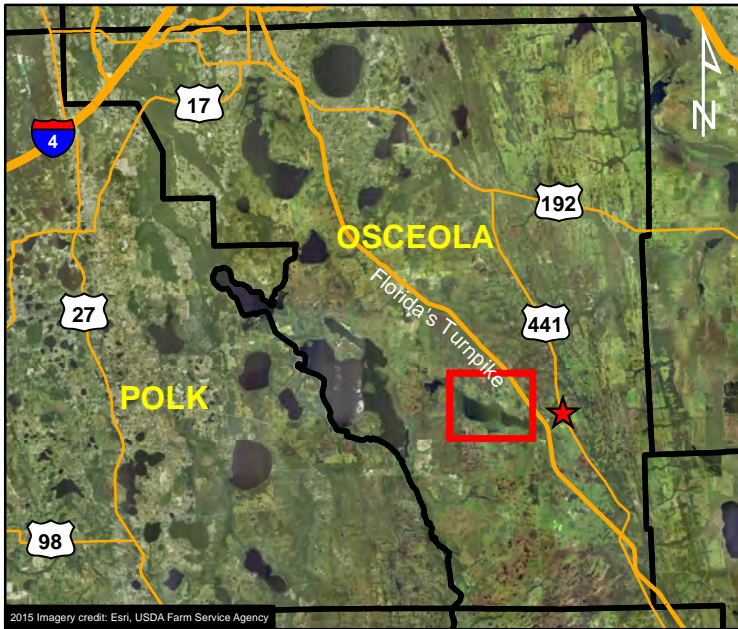
- ★ Lake Wales
-  Public Boat Ramp
- Road
-  Harvest Unit



HARVEST UNIT DESCRIPTION:

The state-owned waters located within the water line of Lake Pierce in Polk County; excluding more than 50 yards up any connecting natural or manmade waterway. This map is offered as a courtesy to familiarize participants with the general location of the harvest unit. Please refer to your permit for full details of the harvest unit description and boundary.

AMU 102 - Lake Marian



Legend

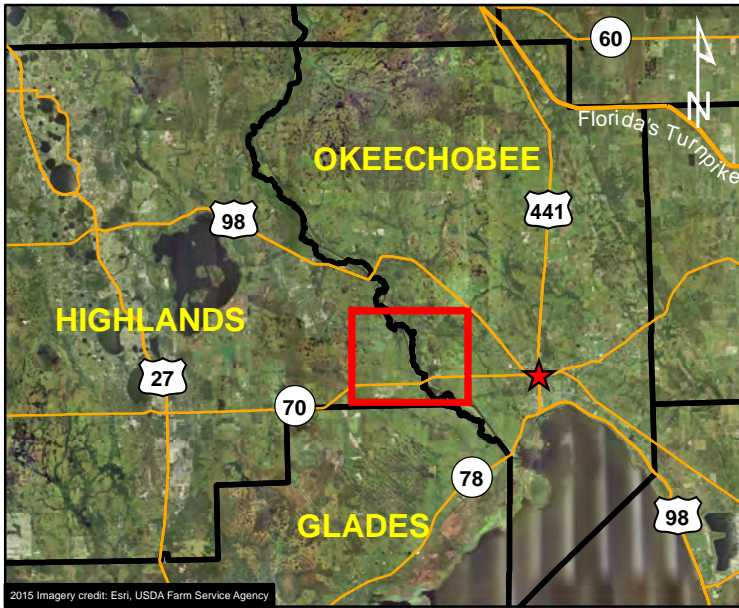
- ★ Kenansville
-  Public Boat Ramp
- Road
-  Harvest Unit



HARVEST UNIT DESCRIPTION:

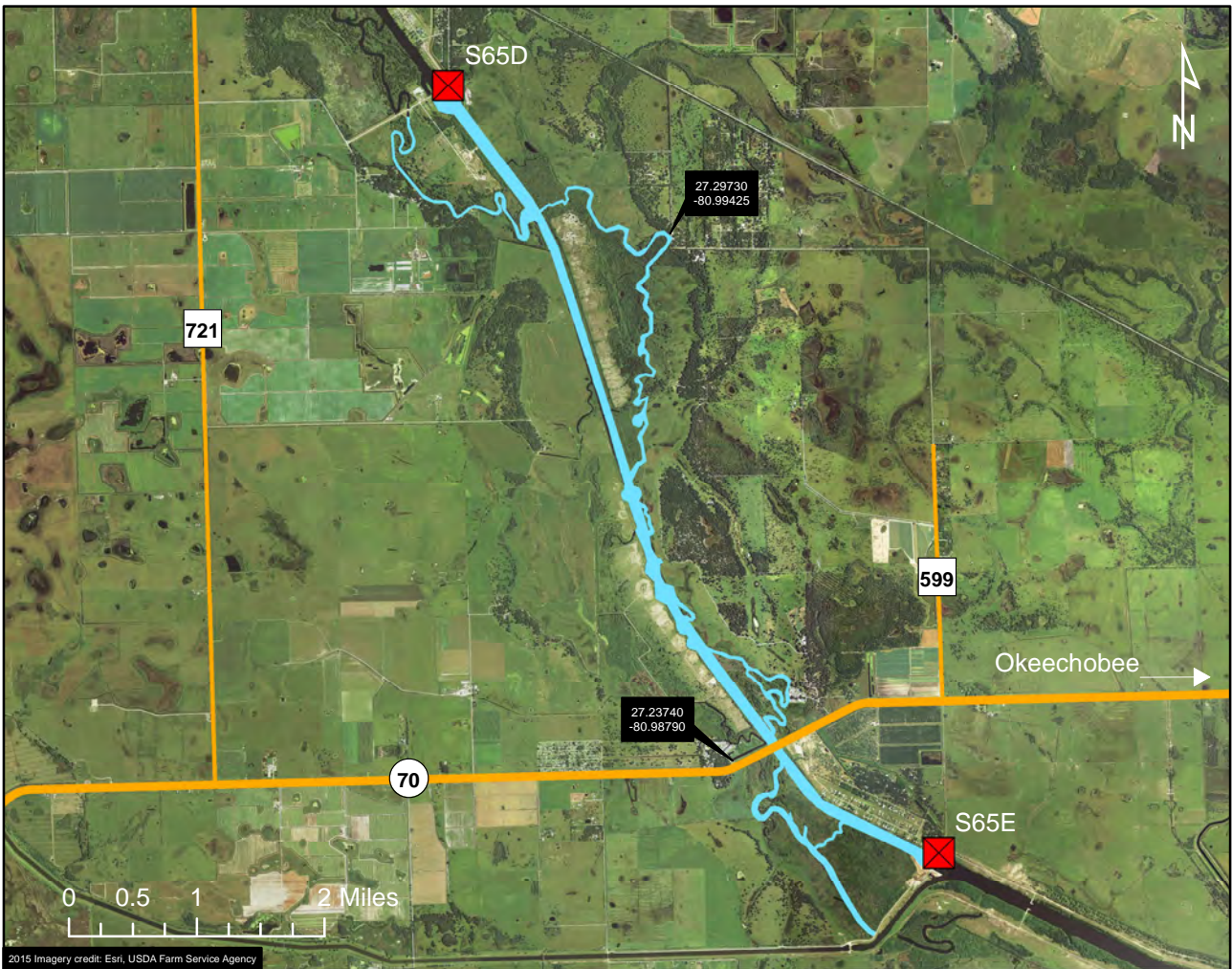
The state-owned waters located within the water line of Lake Marian in Osceola County; excluding more than 50 yards up any connecting natural or manmade waterway. This map is offered as a courtesy to familiarize participants with the general location of the harvest unit. Please refer to your permit for full details of the harvest unit description and boundary.

AMU 103 - Kissimmee River (Pool E)



Legend

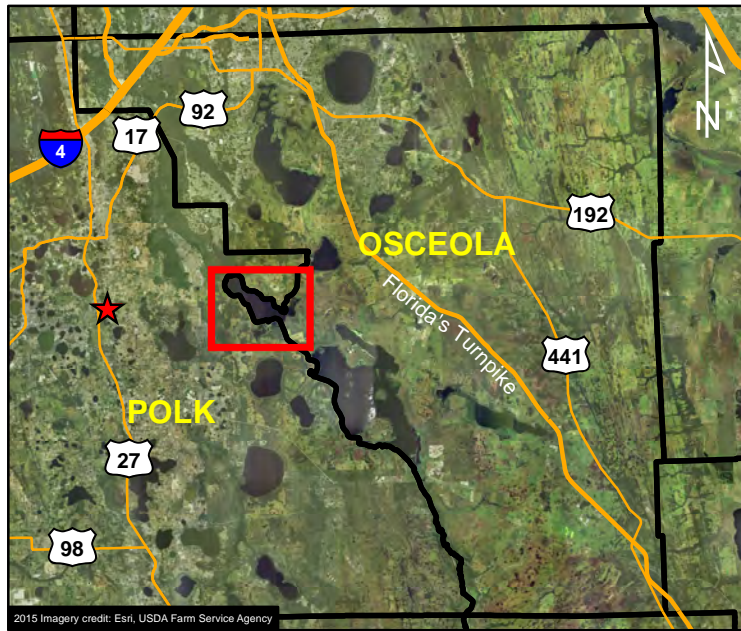
- Okeechobee
- Public Boat Ramp
- Water Control Structure
- Road
- Harvest Unit





HARVEST UNIT DESCRIPTION:

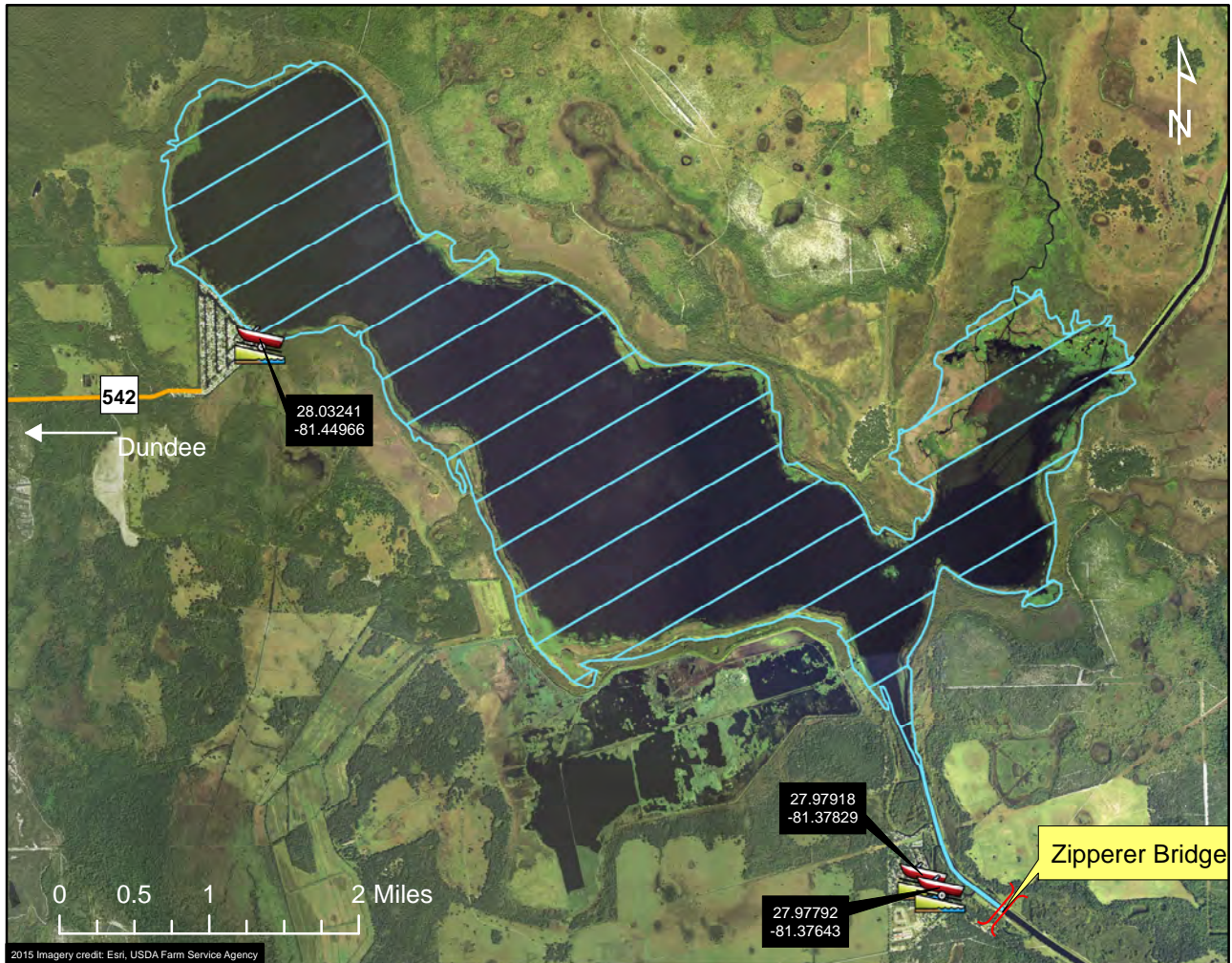
The state-owned waters located within the water line of the Kissimmee River and C38 Canal (Pool E) in Okeechobee and Highlands counties; north from the S65E structure, located 1.5 miles south of SR 70, approximately 7 miles to the S65D structure, located 3 miles south of US Hwy 98; and excluding more than 50 yards up any connecting natural or manmade waterway. This map is offered as a courtesy to familiarize participants with the general location of the harvest unit. Please refer to your permit for full details of the harvest unit description and boundary.

AMU 104 - Lake Hatchineha



Legend

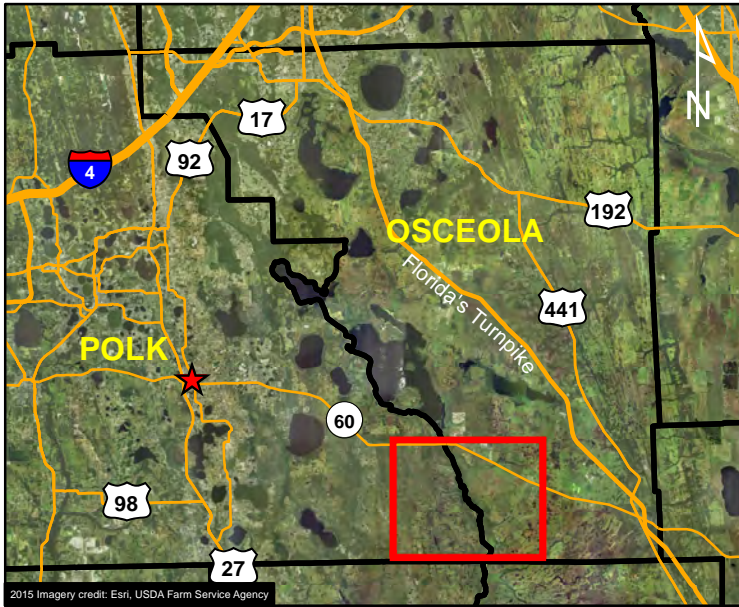
- ★ Dundee
-  Public Boat Ramp
- Road
-  Harvest Unit






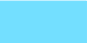
HARVEST UNIT DESCRIPTION:

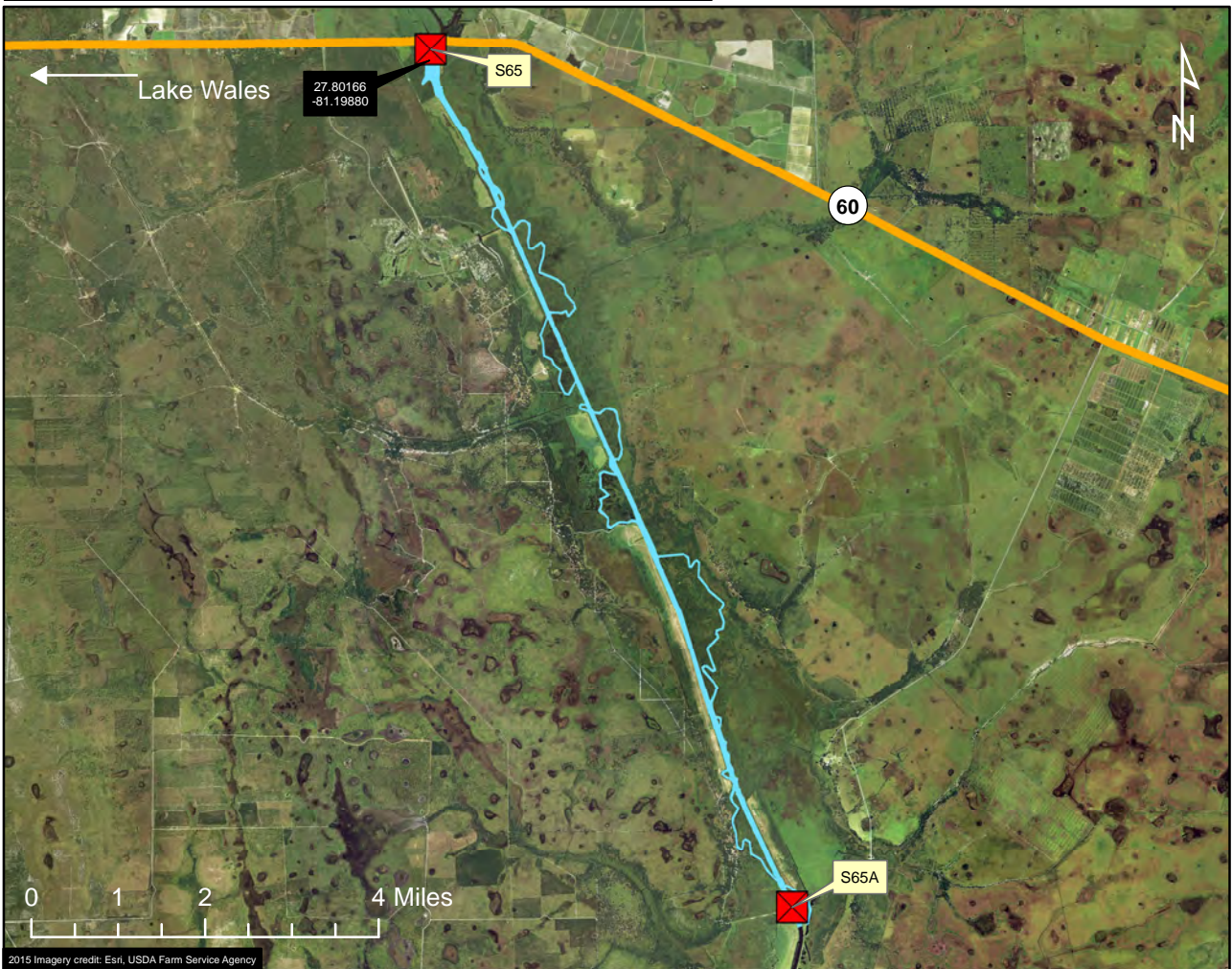
The state-owned waters located within the water line of Lake Hatchineha in Polk and Osceola counties; excluding more than 50 yards up any connecting natural or manmade waterway except as follows: south down the Kissimmee River Canal (C37) approximately one mile to the Zipperer Bridge, south of Camp Lester. This map is offered as a courtesy to familiarize participants with the general location of the harvest unit. Please refer to your permit for full details of the harvest unit description and boundary.

AMU 105 - Kissimmee River (Pool A)



Legend

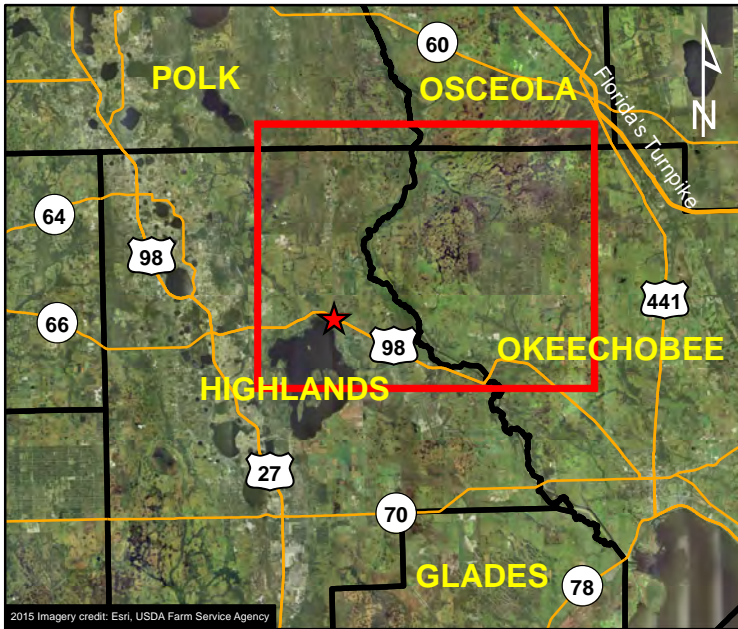
- ★ Lake Wales
-  Public Boat Ramp
-  Water Control Structure
-  Road
-  Harvest Unit



HARVEST UNIT DESCRIPTION:

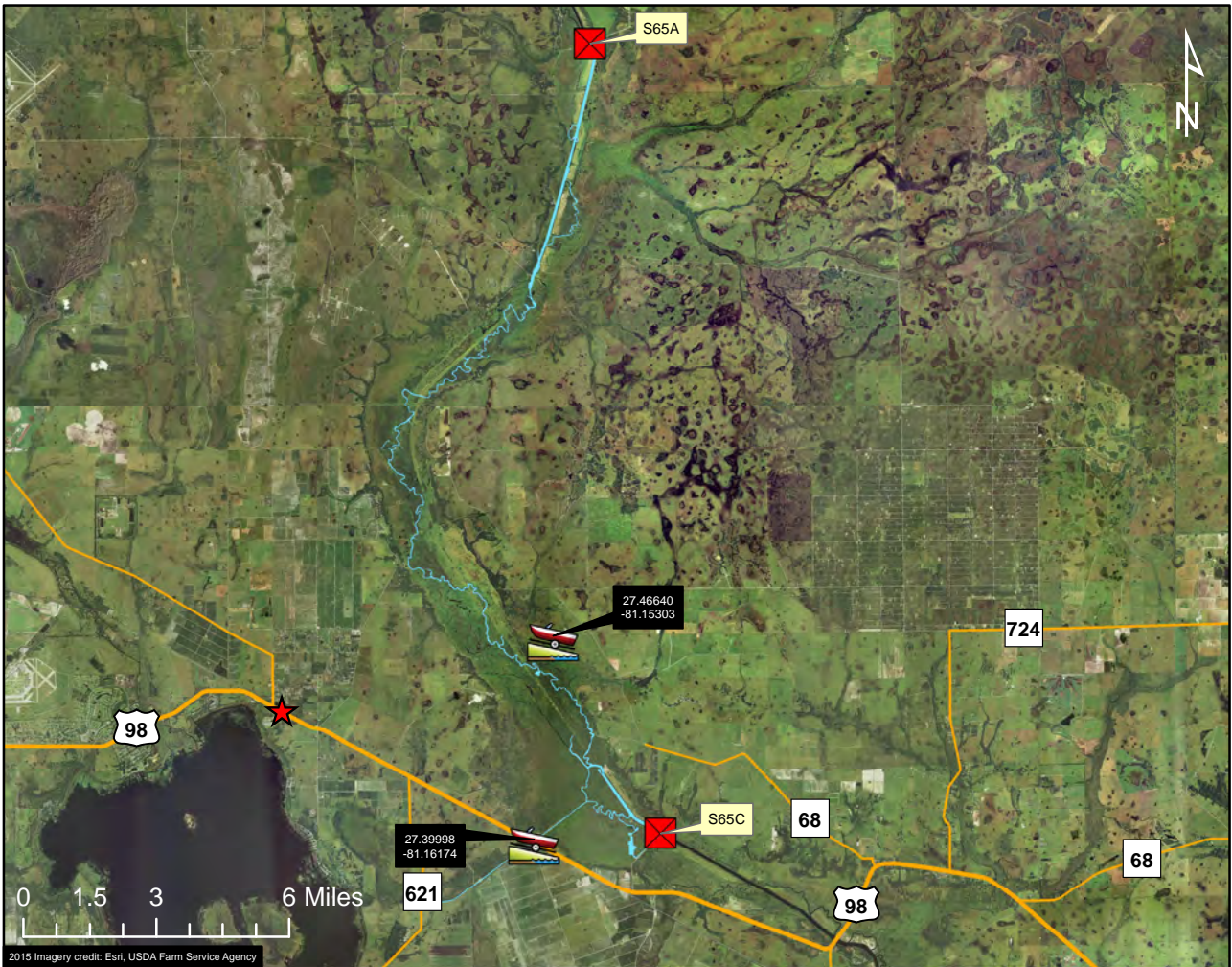
The state-owned waters located within the water line of the Kissimmee River and C38 Canal (Pool A) in Osceola and Polk counties; south from the S65 structure, located on SR 60, approximately 11 miles to the S65A structure, located 21 miles north of US Hwy. 98; excluding more than 50 yards up any connecting natural or manmade waterway. This map is offered as a courtesy to familiarize participants with the general location of the harvest unit. Please refer to your permit for full details of the harvest unit description and boundary.

AMU 106 - Kissimmee River



Legend

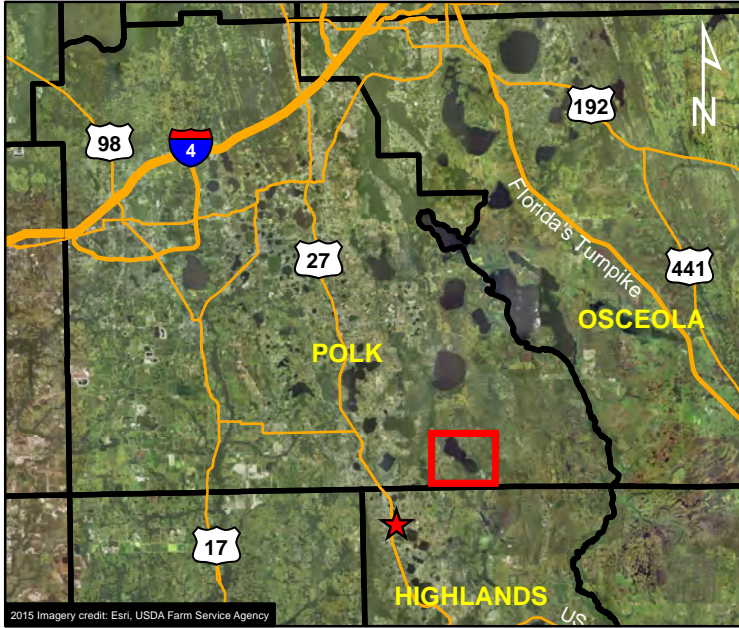
- ★ Lorida
- Public Boat Ramp
- Water Control Structure
- Road
- Harvest Unit






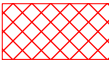

HARVEST UNIT DESCRIPTION:

The state-owned waters located within the water line of the Kissimmee River and the C38 Canal (Pool B & C) in Polk, Osceola, Highlands, and Okeechobee counties; north from the S65C structure, located 1.5 miles north of US Hwy. 98, approximately 20 miles to the S65A structure, located 11 miles south of SR 60, and including the Istokpoga Canal approximately 4.3 miles west to the CR 621 Bridge; excluding more than 50 yards up any connecting natural or manmade waterway. This map is offered as a courtesy to familiarize participants with the general location of the harvest unit. Please refer to your permit for full details of the harvest unit description and boundary.

AMU 108 - Lake Arbuckle



Legend

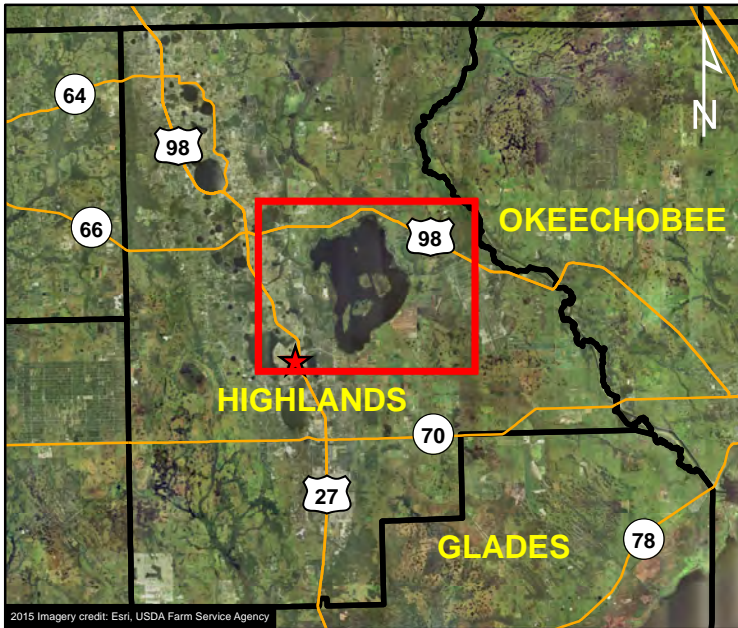
-  Avon Park
-  Public Boat Ramp
-  Road
-  Bombing Range
-  Harvest Unit







HARVEST UNIT DESCRIPTION:

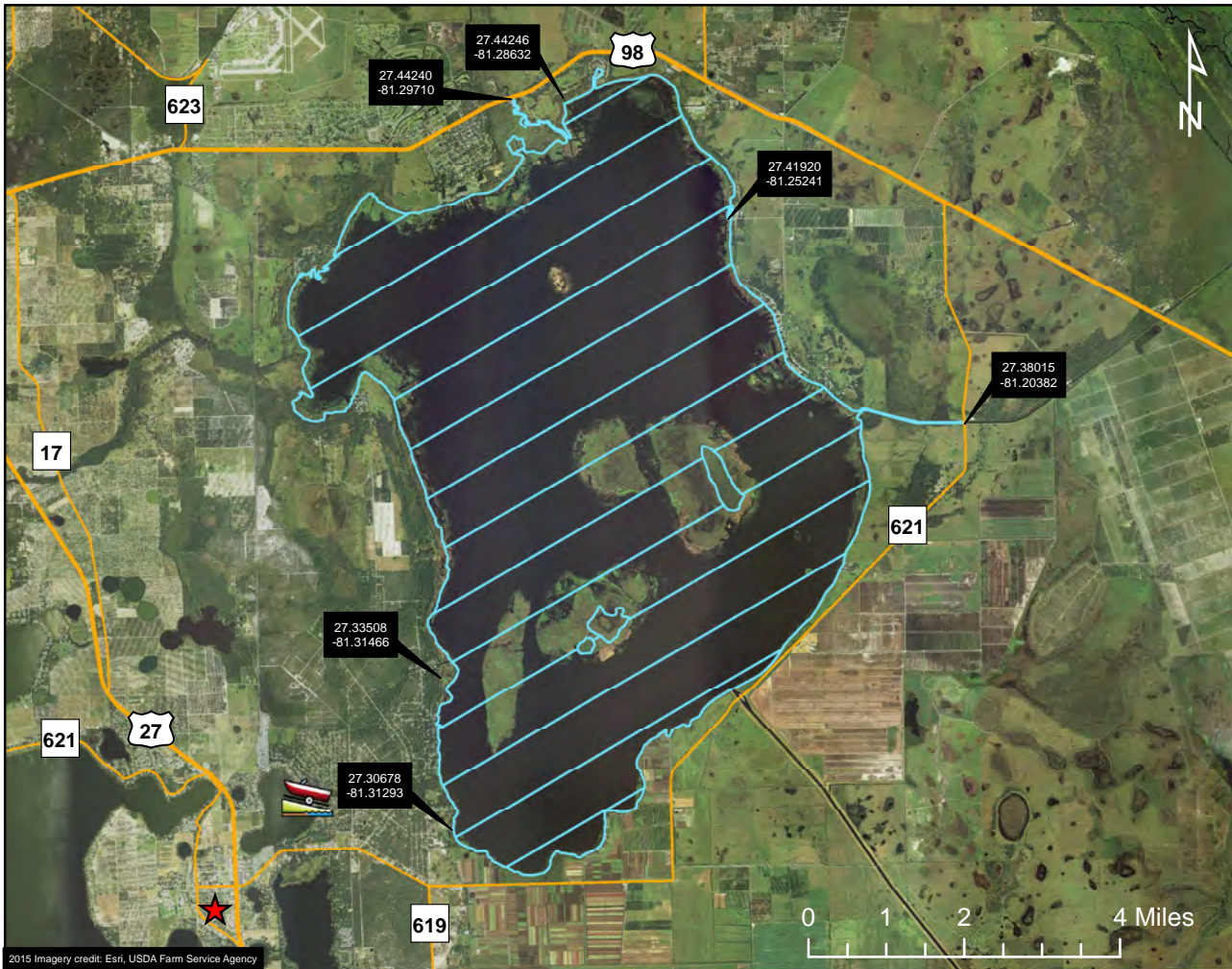
The state-owned waters located within the water line of Lake Arbuckle in Polk County; north of CR 64 and west of Avon Park Bombing Range; excluding more than 50 yards up any connecting natural or manmade waterway. This map is offered as a courtesy to familiarize participants with the general location of the harvest unit. Please refer to your permit for full details of the harvest unit description and boundary.

AMU 109 - Lake Istokpoga



Legend

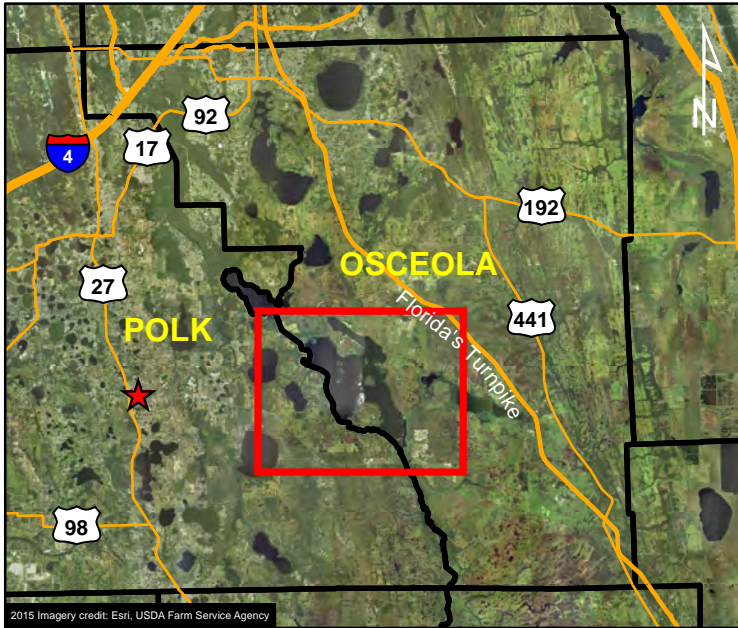
-  Lake Placid
-  Public Boat Ramp
-  Road
-  Harvest Unit



HARVEST UNIT DESCRIPTION:

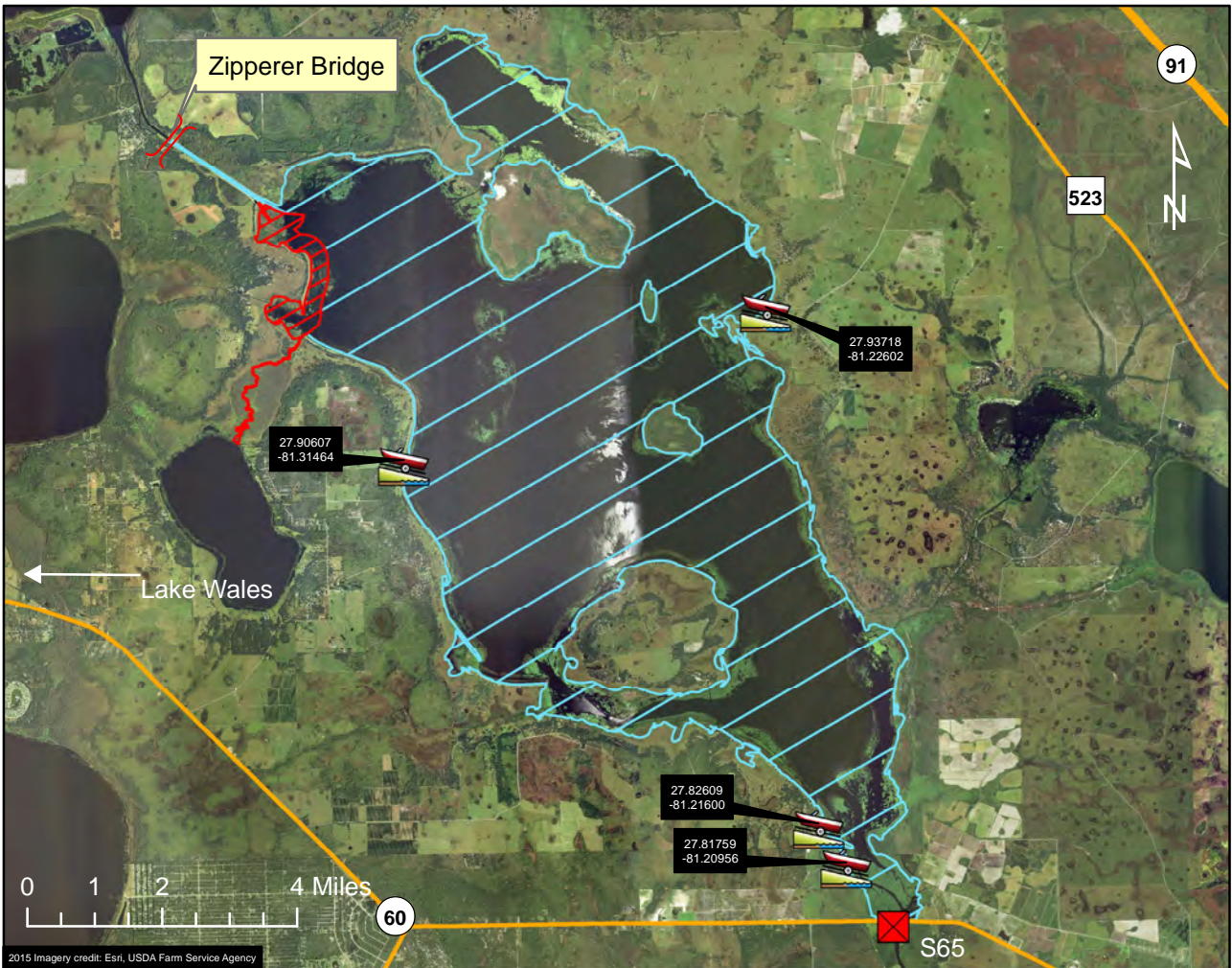
The state-owned waters located within the water line of Lake Istokpoga in Highlands County; south of US Hwy. 98, north and west of CR 621, east of US Hwy. 27; north up Arbuckle Creek approximately one mile to US Hwy. 98; east on the Istokpoga Canal approximately 1.5 miles to CR 621; and excluding more than 50 yards up any connecting natural or manmade waterway. This map is offered as a courtesy to familiarize participants with the general location of the harvest unit. Please refer to your permit for full details of the harvest unit description and boundary.

AMU 110 - Lake Kissimmee



Legend

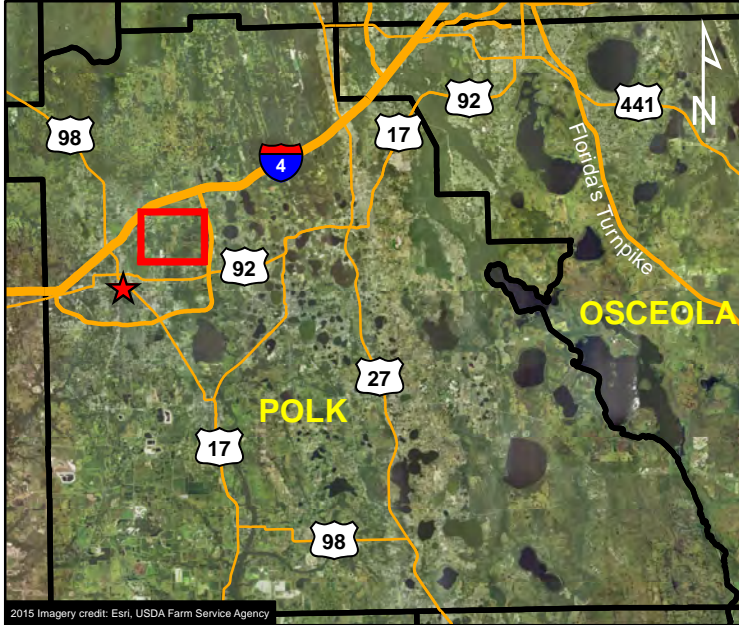
- ★ Lake Wales
- Boat Ramp
- Water Control Structure
- Road
- Restricted Area
- Harvest Unit





HARVEST UNIT DESCRIPTION:

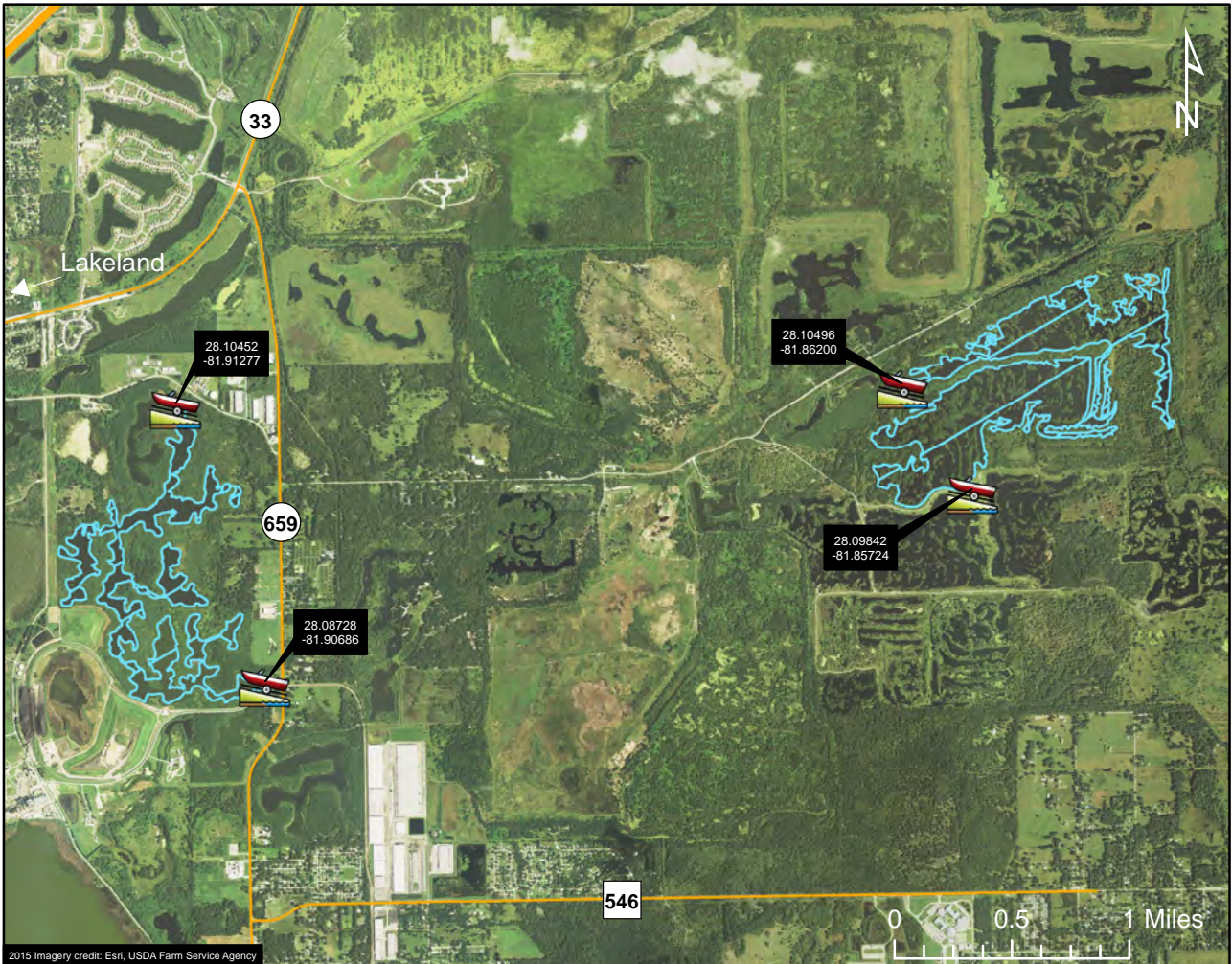
The state-owned waters located within the water line of Lake Kissimmee in Polk and Osceola counties; north of the S65 structure located immediately south of SR 60; and south of the Zipperer Bridge located approximately 1.7 miles up the Kissimmee River Canal (C37); excluding Tiger Creek, the Lake Kissimmee State Park access canal, the portion of the lake within 1/4 mile of the emergent vegetation bordering the lake shore between the Kissimmee River Canal (C37) and Tiger Creek (or that area otherwise known as Tiger Cove), and more than 50 yards up any connecting natural or manmade waterway. This map is offered as a courtesy to familiarize participants with the general location of the harvest unit. Please refer to your permit for full details of the harvest unit description and boundary.

AMU 112 - Tenoroc Fish Management Area



Legend

- ★ Lakeland
-  Public Boat Ramp
- Road
-  Harvest Unit



HARVEST UNIT DESCRIPTION:

The state-owned waters located within the water line of lakes B and 5 on Tenoroc Fish Management Area in Polk County. This map is offered as a courtesy to familiarize participants with the general location of the harvest unit. Please refer to your permit for full details of the harvest unit description and boundary.

County-wide Alligator Harvest Unit Maps

These maps are offered as a courtesy to familiarize participants with the general location of each county-wide harvest unit. The harvest areas listed in each county-wide map are offered as suggestions and are not intended to limit additional accessible areas available for harvest. Some harvest units are more restrictive than others so please refer to your permit for full details of the harvest unit description, boundary, and harvest period.

To search for additional bodies of water that have been hunted under a county-wide permit in the past, please use the “Statewide Alligator Harvest Data Search” resource located on the MyFWC.com website here: <http://myfwc.com/wildlifehabitats/managed/alligator/harvest/data-search/>.